

## ภาคผนวกที่ 4

เอกสารการสอบเทียบความถูกต้องของเครื่องมือ

**ตารางสรุปรายการเอกสารการสอบเทียบความถูกต้องของเครื่องมือเก็บตัวอย่าง  
และเครื่องมือวิเคราะห์คุณภาพสิ่งแวดล้อม**

รายการตรวจวิเคราะห์	เครื่องมือเก็บตัวอย่าง	เครื่องมือตรวจวิเคราะห์
	ชื่อเครื่องมือ	ชื่อเครื่องมือ
<b>1. คุณภาพอากาศในบรรยากาศ</b> Total Suspended Particulate (TSP)	High Volume Air Sampler Rec No. , Blow No. R03, R04, R08	Digital Balance
Nitrogen Dioxide (NO <sub>2</sub> )	NO/ NO <sub>2</sub> / NO <sub>x</sub> Analyzer	NO/ NO <sub>2</sub> / NO <sub>x</sub> Analyzer
Sulfur Dioxide (SO <sub>2</sub> )	SO <sub>2</sub> Analyzer	SO <sub>2</sub> Analyzer
<b>2. คุณภาพอากาศจากแหล่งกำเนิด</b> Oxides of Nitrogen (NO <sub>x</sub> )	Vacuum Gauge	Spectrophotometer
Sulfur Dioxide (SO <sub>2</sub> )	Personal Pump SKC No. R06, R23 Rotameter No. R01	-
Chlorine (Cl)	Personal Pump SKC No. B66 Rotameter No. R01	IC
Hydrogen Chloride (HCl)	Personal Pump SKC No. B66 Rotameter No. R01	IC
<b>3. คุณภาพน้ำ</b> pH	-	- pH Meter
Temperature	-	- Thermometer
Total Suspended Solids	-	- Digital Balance
Total Dissolved Solids	-	- Digital Balance
BOD5	-	- BOD Analyzer
COD	-	- COD Reactor
Grease & Oil	-	- Digital Balance
<b>3. เสียง</b> L <sub>eq</sub> 24 hr, L <sub>90</sub> และ L <sub>max</sub>	Acoustic Calibrator Sound Level Meter ACO-R05, R22, R29, R30, R31	-
<b>4. คุณภาพอากาศในสถานประกอบการ</b> Chlorine	Personal Pump SKC No. B11, B67 Rotameter No. H-R01	Spectrophotometer
Total Hydrocarbons	Personal Pump SKC No. B32, B77 Rotameter No. H-R01	THC Analyzer
Non Methane Hydrocarbons	Personal Pump SKC No. B32, B77 Rotameter No. H-R01	THC Analyzer
Propylene	Personal Pump SKC No. B32, B77 Rotameter No. H-R01	GC/MS

**ตารางสรุปรายการเอกสารการสอบเทียบความถูกต้องของเครื่องมือเก็บตัวอย่าง  
และเครื่องมือวิเคราะห์คุณภาพสิ่งแวดล้อม (ต่อ)**

รายการตรวจวิเคราะห์	เครื่องมือเก็บตัวอย่าง	เครื่องมือตรวจวิเคราะห์
	ชื่อเครื่องมือ	ชื่อเครื่องมือ
4. คุณภาพอากาศในสถานประกอบการ (ต่อ)		
Propane	Personal Pump SKC No. B32, B77 Rotameter No. H-R01	GC/MS
Ethane	Personal Pump SKC No. B32, B77 Rotameter No. H-R01	GC/MS
5. การรับสัมผัสสารเคมี		-
Benzene	Personal Pump SKC No. R21 Rotameter No. L-R02	GC/FID
Toluene	Personal Pump SKC No. R21 Rotameter No. L-R02	GC/FID
Xylene	Personal Pump SKC No. R21 Rotameter No. L-R02	GC/FID
6. ระดับเสียงในสถานประกอบการ		
$L_{eq}$ 12 hr, $L_{eq}$ 8 hr, $L_{max}$ และ Octave Band	Acoustic Calibrator Sound Level Meter No. ACO-R21, R36, R37, R38, R46	- -
Octave Band	Acoustic Calibrator Sound Level Meter No. ACO-R21, R36, R37, R38, R46	- -
Noise Dose	Acoustic Calibrator Sound Level Meter No. NMD- B01, B02, B03, B04, B05, B06, B07, B08, B09, R02, R03, R05, R06, R13, R20 R22, R26, R27, R35	- -

คุณภาพอากาศในบรรยากาศ





บริษัท เอส.พี.เอส. คอนซัลติ้ง เซอร์วิส จำกัด

S.P.S. CONSULTING SERVICE CO., LTD.

7 ซอยพหลโยธิน 24 ถนนพหลโยธิน แขวงจตุจักร เขตจตุจักร กรุงเทพฯ 10900

7 Soi Phaholyothin 24, Phaholyothin Rd., Jompol, Chatuchak, Bangkok 10900  
Tel : (662) 939-4370-72, Fax : (662) 513-4221, E-mail : sale@spscon.com, www.spscon.com

## High Volume Air Sampler Calibration Report

Calibration Method : Multipoint Orifice Flow Transfer Standard

Model : TE 5025A

S/N : 3611

### Calibration Data

High Volume Air Sampler Data		Calibration Data		
Recorder No.	Blower No.	Date	Actual Flowrate (ft <sup>3</sup> /min)	R <sup>2</sup>
B35	B35	03/08/2022	y = 1.324x-9.985	0.995
B36	B36	02/08/2022	y = 1.199x-5.068	0.998
B37	B37	01/08/2022	y = 1.263x-6.105	0.995
B38	B38	01/08/2022	y = 1.200x-4.049	0.998
B39	B39	01/08/2022	y = 1.323x-9.022	0.998
B40	B40	01/08/2022	y = 1.223x-4.993	0.997
B41	B41	01/08/2022	y = 1.236x-5.071	0.998
B42	B42	01/08/2022	y = 1.230x-4.886	0.998
B43	B43	02/08/2022	y = 1.189x-3.190	0.998
B44	B44	02/08/2022	y = 1.336x-10.058	0.996
R01	R01	02/08/2022	y = 1.271x-7.214	0.999
R02	R02	02/08/2022	y = 1.254x-7.346	1.000
R03	R03	02/08/2022	y = 1.258x-7.858	0.998
R04	R04	02/08/2022	y = 1.175x-2.851	0.998
R05	R05	02/08/2022	y = 1.240x-7.136	0.999
R06	R06	01/08/2022	y = 1.389x-11.486	0.998
R07	R07	01/08/2022	y = 1.060x+2.168	0.998
R08	R08	01/08/2022	y = 1.206x-5.068	0.997
R09	R09	01/08/2022	y = 1.275x-7.830	0.998
R10	R10	02/08/2022	y = 1.260x-6.945	0.998
R11	R11	02/08/2022	y = 1.116x-1.299	0.999
R12	R12	02/08/2022	y = 1.294x-8.990	0.996
R13	R13	02/08/2022	y = 1.133x-0.833	0.999
R14	R14	03/08/2022	y = 1.157x-2.099	0.999
R15	R15	03/08/2022	y = 1.178x-3.248	0.999
R16	R16	03/08/2022	y = 1.203x-5.180	0.999
R17	R17	03/08/2022	y = 1.267x-6.960	0.999
R18	R18	04/08/2022	y = 1.281x-7.586	0.995
R19	R19	04/08/2022	y = 1.223x-4.898	0.995
R20	R20	04/08/2022	y = 1.350x-11.132	0.998





บริษัท เอส.พี.เอส. คอนซัลติ้ง เซอร์วิส จำกัด  
S.P.S. CONSULTING SERVICE CO., LTD.  
7 ซอยพหลโยธิน 24 ถนนพหลโยธิน แขวงจตุจักร เขตจตุจักร กรุงเทพฯ 10900  
7 Soi Phaholyothin 24, Phaholyothin Rd., Jomjol, Chatuchak, Bangkok 10900  
Tel : (662) 939-4370-72, Fax : (662) 513-4221, E-mail : sale@spscon.com, www.spscon.com

### CALIBRATION REPORT

#### CHEMILUMINESCENT NO / NO<sub>2</sub> / NO<sub>x</sub> ANALYZER

DATE : 04 September 2022

BRAND : API

MODEL : 200E

NO. NOX-R01

SERIAL NO. 769

#### Calibrator (Dilution System)

Brand : API

Model : 700

Last Cal. Date : 04 August 2022

Serial No. : 911

#### Reference Standard Gas

Standard Gas : Nitric Oxide (NO)

Cylinder No. : D636192

Certified Date : 20 April 2022

Expired Date : 20 April 2024

Cylinder Conc. : 49.1 ppm

#### CALIBRATING CONDITION

Pressure 1011 mmbar

Temp. 24.5 °C

% RH 49

#### CALIBRATION SETTING

Span Set Point	Initial Reading (Before Adj.), PPB			Final Reading (After Adj.), PPB	
	Expected Concentration	Analyzer Response	% Dif	Analyzer Response	Slope
Zero	0	0.11	-	0	-
NO Span	400	400.2	0.050	400.0	1.008
NO <sub>x</sub> Span	400	400.4	0.100	400.0	1.012

#### API Model 200E NO<sub>x</sub> Analyzer Check List

Test Values	Observed Value	Units	Nominal Range
RANGE	500	PPB	500 standard
STABILITY (Zero Gas)	0.1	PPB	< 2 with zero air
SAMPLE FLOW	510	cc/min	500 ± 50
OZONE FLOW	79	cc/min	80 ± 15
PMT	103.1	mV	-20 - 150
AZERO	93.9	mV	-20 - 150
HVPS	674	V	420 - 900 constant
RCELL TEMP	50.1	°C	50 ± 1
BOX TEMP	29.3	°C	8 - 48
PMT TEMP	7.4	°C	7 ± 2
MOLY TEMP	314.7	°C	315 ± 5
RCELL PRESS	8.4	IN-Hg-A	2 - 10 constant
SAMPLE PRESS	28.7	IN-Hg-A	25 - 30 constant
NO Span Conc	400	PPB	20 - 20,000
NO <sub>x</sub> Span Conc	400	PPB	20 - 20,000
NO Slope	1.008	-	1.0 ± 0.3
NO <sub>x</sub> Slope	1.012	-	1.0 ± 0.3
NO Offset	1.7	mV	-20 to +150
NO <sub>x</sub> Offset	1.0	mV	-20 to 150
Stability at Zero	0.1	PPB	< 0.2
Stability at Span	0.2	PPB	< 2 ppb @ 400 ppb span gas



บริษัท เอส.พี.เอส. คอนซัลติ้ง เซอร์วิส จำกัด  
S.P.S. CONSULTING SERVICE CO., LTD.  
7 ซอยพหลโยธิน 24 ถนนพหลโยธิน แขวงจตุจักร เขตจตุจักร กรุงเทพฯ 10900  
7 Soi Phaholyothin 24, Phaholyothin Rd., Jompot, Chatuchak, Bangkok 10900  
Tel : (662) 939-4370-72, Fax : (662) 513-4221, E-mail : sale@spscon.com, www.spscon.com

### CALIBRATION REPORT

#### CHEMILUMINESCENT NO / NO<sub>2</sub> / NO<sub>x</sub> ANALYZER

DATE : 04 September 2022

BRAND : API

MODEL : 200E

NO. NOX-R02

SERIAL NO. 2285

#### Calibrator (Dilution System)

Brand : API

Model : 700

Last Cal. Date : 04 August 2022

Serial No. : 911

#### Reference Standard Gas

Standard Gas : Nitric Oxide (NO)

Cylinder No. : D636192

Certified Date : 20 April 2022

Expired Date : 20 April 2024

Cylinder Conc. : 49.1 ppm

#### CALIBRATING CONDITION

Pressure 1011 mmbar

Temp. 24.5 °C

% RH 49

#### CALIBRATION SETTING

Span Set Point	Initial Reading (Before Adj.), PPB			Final Reading (After Adj.), PPB	
	Expected Concentration	Analyzer Response	%Dif	Analyzer Response	Slope
Zero	0	-0.10	-	0	-
NO Span	400	400.1	0.025	400.0	1.006
NO <sub>x</sub> Span	400	400.2	0.050	400.0	1.010

#### API Model 200E NO<sub>x</sub> Analyzer Check List

Test Values	Observed Value	Units	Nominal Range
RANGE	500	PPB	500 standard
STABILITY (Zero Gas)	0.1	PPB	< 2 with zero air
SAMPLE FLOW	506	cc/min	500 ± 50
OZONE FLOW	78	cc/min	80 ± 15
PMT	103.2	mV	-20 - 150
AZERO	94.0	mV	-20 - 150
HVPS	670	V	420 - 900 constant
RCELL TEMP	50.3	°C	50 ± 1
BOX TEMP	29.4	°C	8 - 48
PMT TEMP	7.1	°C	7 ± 2
MOLY TEMP	314.9	°C	315 ± 5
RCELL PRESS	8.3	IN-Hg-A	2 - 10 constant
SAMPLE PRESS	28.6	IN-Hg-A	25 - 30 constant
NO Span Conc	400	PPB	20 - 20,000
NO <sub>x</sub> Span Conc	400	PPB	20 - 20,000
NO Slope	1.006	-	1.0 ± 0.3
NO <sub>x</sub> Slope	1.010	-	1.0 ± 0.3
NO Offset	1.3	mV	-20 to +150
NO <sub>x</sub> Offset	0.9	mV	-20 to 150
Stability at Zero	0.1	PPB	< 0.2
Stability at Span	0.2	PPB	< 2 ppb @ 400 ppb span gas





บริษัท เอส.พี.เอส. คอนซัลติ้ง เซอร์วิส จำกัด  
S.P.S. CONSULTING SERVICE CO., LTD.  
7 ซอยพหลโยธิน 24 ถนนพหลโยธิน แขวงจตุจักร กรุงเทพฯ 10900  
7 Soi Phaholyothin 24, Phaholyothin Rd., Jompol, Chulachak, Bangkok 10900  
Tel : (662) 939-4370-72, Fax : (662) 513-4221, E-mail : sale@spscon.com, www.spscon.com

### CALIBRATION REPORT

#### CHEMILUMINESCENT NO / NO<sub>2</sub> / NO<sub>x</sub> ANALYZER

DATE : 04 September 2022

BRAND : API

MODEL : 200E

NO. NOX-R06

SERIAL NO. 4466

#### Calibrator (Dilution System)

Brand : API

Model : 700

Last Cal. Date : 04 August 2022

Serial No. : 911

#### Reference Standard Gas

Standard Gas : Nitric Oxide (NO)

Cylinder No. : D636192

Certified Date : 20 April 2022

Expired Date : 20 April 2024

Cylinder Conc. : 49.1 ppm

#### CALIBRATING CONDITION

Pressure 1011 mmbar

Temp. 24.5 °C

% RH 49

#### CALIBRATION SETTING

Span Set Point	Initial Reading (Before Adj.), PPB			Final Reading (After Adj.), PPB	
	Expected Concentration	Analyzer Response	%Dif	Analyzer Response	Slope
Zero	0	-0.10	-	0	-
NO Span	400	399.7	-0.075	400.0	1.003
NO <sub>x</sub> Span	400	400.1	0.025	400.0	1.006

#### API Model 200E NO<sub>x</sub> Analyzer Check List

Test Values	Observed Value	Units	Nominal Range
RANGE	500	PPB	500 standard
STABILITY (Zero Gas)	0.1	PPB	< 2 with zero air
SAMPLE FLOW	508	cc/min	500 ± 50
OZONE FLOW	78	cc/min	80 ± 15
PMT	103.0	mV	-20 - 150
AZERO	93.7	mV	-20 - 150
HVPS	669	V	420 - 900 constant
RCELL TEMP	50.0	°C	50 ± 1
BOX TEMP	28.8	°C	8 - 48
PMT TEMP	7.2	°C	7 ± 2
MOLY TEMP	315.3	°C	315 ± 5
RCELL PRESS	8.2	IN-Hg-A	2 - 10 constant
SAMPLE PRESS	28.4	IN-Hg-A	25 - 30 constant
NO Span Conc	400	PPB	20 - 20,000
NO <sub>x</sub> Span Conc	400	PPB	20 - 20,000
NO Slope	1.003	-	1.0 ± 0.3
NO <sub>x</sub> Slope	1.006	-	1.0 ± 0.3
NO Offset	1.1	mV	-20 to +150
NO <sub>x</sub> Offset	0.7	mV	-20 to 150
Stability at Zero	0.1	PPB	< 0.2
Stability at Span	0.2	PPB	< 2 ppb @ 400 ppb span gas



บริษัท เอส.พี.เอส. คอนซัลติ้ง เซอร์วิส จำกัด  
S.P.S. CONSULTING SERVICE CO., LTD.  
7 ซอยพหลโยธิน 24 ถนนพหลโยธิน แขวงจอมพล เขตจตุจักร กรุงเทพฯ 10900  
7 Soi Phaholyothin 24, Phaholyothin Rd., Jompol, Chatuchak, Bangkok 10900  
Tel : (662) 939-4370-72, Fax : (662) 513-4221, E-mail : sale@spscon.com, www.spscon.com

CALIBRATION REPORT					
SO <sub>2</sub> FLUORESCENT ANALYZER					
DATE :	04 September 2022	BRAND :	API	MODEL :	100E
NO.	SO <sub>2</sub> -R03			SERIAL NO.	3488
Calibrator (Dilution System)					
Brand	: API			Model	: 700
Last Cal. Date	: 04 August 2022			Serial No.	: 911
Reference Standard Gas					
Standard Gas	: Sulphur Dioxide (SO <sub>2</sub> )			Cylinder No.	: A00814SK
Certified Date	: 21 June 2021	Expired Date	: 21 June 2029	Cylinder Conc.	: 50.0 ppm
CALIBRATING CONDITION					
Pressure	1011	mmbar	Temp.	24.5	°C
			% RH	49	
CALIBRATION SETTING					
Span	Initial Reading (Before Adj.),PPB			Final Reading (After Adj.),PPB	
Set Point	Expected Concentration	Analyzer Response	%Dif	Analyzer Response	Slope
Zero	0	0.11	-	0	-
SO <sub>2</sub> Span	400.0	399.6	-0.100	400.0	1.005
API Model 100E SO <sub>2</sub> Analyzer Check list					
Test Values	Observed Value	Units	Nominal Range		
RANGE	500	PPB	0-500		
SAMPLE PRESS	28.4	in-Hg	25-35		
SAMPLE FLOW	652	cc/min	650 ± 10%		
PMT	103.1	mV	-20-150 with Zero Air		
UV LAMP	3018.4	mV	1000-4900		
STR. LGT	61.3	PPB	<100		
DRK PMT	62.9	mV	-50 - 200		
DRK LMP	57.8	mV	-50 - 200		
HVPS	669	V	550-900 constant		
DCPS	2515	mV	2500 ± 200		
RCELL TEMP	50.3	°C	50 ± 1		
BOX TEMP	29.1	°C	5-40		
PMT TEMP	7.4	°C	7 ± 2.0		
SO <sub>2</sub> Span Conc	400	PPB	20-20,000		
SO <sub>2</sub> Slope	1.005	-	1.0 ± 0.3		
SO <sub>2</sub> Offset	21.9	mV	<250		
Stability at Zero	0.1	PPB	<0.2		
Stability at Span	0.2	PPB	0.5% of reading (above 50 ppb)		



บริษัท เอส.พี.เอส. คอนซัลติ้ง เซอร์วิส จำกัด  
S.P.S. CONSULTING SERVICE CO., LTD.  
7 ซอยพหลโยธิน 24 ถนนพหลโยธิน แขวงจตุจักร กรุงเทพฯ 10900  
7 Soi Phaholyothin 24, Phaholyothin Rd., Jompol, Chatuchak, Bangkok 10900  
Tel : (662) 939-4370-72, Fax : (662) 513-4221, E-mail : sale@spscon.com, www.spscon.com

CALIBRATION REPORT					
SO <sub>2</sub> FLUORESCENT ANALYZER					
DATE :	04 September 2022	BRAND :	API	MODEL :	100E
NO.	SO <sub>2</sub> -R04			SERIAL NO.	3489
Calibrator (Dilution System)					
Brand	: API			Model	: 700
Last Cal. Date	: 04 August 2022			Serial No.	: 911
Reference Standard Gas					
Standard Gas	: Sulphur Dioxide (SO <sub>2</sub> )			Cylinder No.	: A00814SK
Certified Date	: 21 June 2021	Expired Date	: 21 June 2029	Cylinder Conc.	: 50.0 ppm
CALIBRATING CONDITION					
Pressure	1011	mmbar	Temp.	24.5	°C
			% RH	49	
CALIBRATION SETTING					
Span	Initial Reading (Before Adj.),PPB			Final Reading (After Adj.),PPB	
Set Point	Expected Concentration	Analyzer Response	%Dif	Analyzer Response	Slope
Zero	0	0.11	-	0	-
SO <sub>2</sub> Span	400.0	400.2	0.050	400.0	1.013
API Model 100E SO <sub>2</sub> Analyzer Check list					
Test Values	Observed Value	Units	Nominal Range		
RANGE	500	PPB	0-500		
SAMPLE PRESS	28.7	in-Hg	25-35		
SAMPLE FLOW	660	cc/min	650 ± 10%		
PMT	103.5	mV	-20-150 with Zero Air		
UV LAMP	3049.7	mV	1000-4900		
STR. LGT	61.9	PPB	<100		
DRK PMT	63.5	mV	-50 - 200		
DRK LMP	58.1	mV	-50 - 200		
HVPS	675	V	550-900 constant		
DCPS	2522	mV	2500 ± 200		
RCELL TEMP	50.5	°C	50 ± 1		
BOX TEMP	29.3	°C	5-40		
PMT TEMP	7.2	°C	7 ± 2.0		
SO <sub>2</sub> Span Conc	400	PPB	20-20,000		
SO <sub>2</sub> Slope	1.013	-	1.0 ± 0.3		
SO <sub>2</sub> Offset	22.2	mV	<250		
Stability at Zero	0.1	PPB	<0.2		
Stability at Span	0.2	PPB	0.5% of reading (above 50 ppb)		

(Mr. Anur Dangkum)

(Mr. Teera Detadom)





บริษัท เอส.พี.เอส. คอนซัลติ้ง เซอร์วิส จำกัด  
S.P.S. CONSULTING SERVICE CO., LTD.  
7 ซอยพหลโยธิน 24 ถนนพหลโยธิน แขวงจตุจักร เขตจตุจักร กรุงเทพฯ 10900  
7 Soi Phaholyothin 24, Phaholyothin Rd., Jompol, Chatuchak, Bangkok 10900  
Tel : (662) 939-4370-72 Fax : (662) 513-4221 E-mail : sale@spscon.com www.spscon.com

CALIBRATION REPORT					
SO <sub>2</sub> FLUORESCENT ANALYZER					
DATE :	04 September 2022	BRAND :	TELEDYNE	MODEL :	TML-60
NO.	SO <sub>2</sub> -R08	SERIAL NO.	TRS1064		
Calibrator (Dilution System)					
Brand	: API			Model	: 700
Last Cal. Date	: 04 August 2022			Serial No.	: 911
Reference Standard Gas					
Standard Gas	: Sulphur Dioxide (SO <sub>2</sub> )			Cylinder No.	: A00814SK
Certified Date	: 21 June 2021	Expired Date	: 21 June 2029	Cylinder Conc.	: 50.0 ppm
CALIBRATING CONDITION					
Pressure	1011	mmbar	Temp.	24.5	°C
			% RH	49	
CALIBRATION SETTING					
Span	Initial Reading (Before Adj.),PPB			Final Reading (After Adj.),PPB	
Set Point	Expected Concentration	Analyzer Response	%Dif	Analyzer Response	Slope
Zero	0	0.11	-	0	-
SO <sub>2</sub> Span	400.0	399.8	-0.050	400.0	1.009
API Model TML-60 SO <sub>2</sub> Analyzer Check list					
Test Values	Observed Value	Units	Nominal Range		
RANGE	500	PPB	0-500		
SAMPLE PRESS	28.5	in-Hg	25-35		
SAMPLE FLOW	659	cc/min	650 ± 10%		
PMT	103.3	mV	-20-150 with Zero Air		
UV LAMP	3031.8	mV	1000-4900		
STR. LGT	61.6	PPB	<100		
DRK PMT	63.2	mV	-50 - 200		
DRK LMP	58.0	mV	-50 - 200		
HVPS	671	V	550-900 constant		
DCPS	2527	mV	2500 ± 200		
RCELL TEMP	50.2	°C	50 ± 1		
BOX TEMP	29.4	°C	5-40		
PMT TEMP	7.1	°C	7 ± 2.0		
SO <sub>2</sub> Span Conc	400	PPB	20-20,000		
SO <sub>2</sub> Slope	1.009	-	1.0 ± 0.3		
SO <sub>2</sub> Offset	22.1	mV	<250		
Stability at Zero	0.1	PPB	<0.2		
Stability at Span	0.2	PPB	0.5% of reading (above 50 ppb)		

**QUALITY CALIBRATION CO.,LTD.**

235 Petchkasem 63/2 Road, Laksong, Bangkae, Bangkok 10160

Tel (662) 421-5402, (662) 444-0152-3, Fax (662) 809-4584

[www.qcalibration.com](http://www.qcalibration.com)

CERTIFICATE No : 22M2567

REFERENCE No : 64386-1

PAGE : 1 OF 2

**Certificate of Calibration**

**EQUIPMENT** : DIGITAL BALANCE

**MANUFACTURER** : METTLER TOLEDO

**MODEL** : XS 105DU

**SERIAL No** : 1126422905

**ID No** : BA 05/50

**CONDITION AS RECEIVED** : USED ITEM

**SUBMITTED BY** : S.P.S. CONSULTING SERVICE CO., LTD.  
7 SOI PHAHOLYOTHIN 24, PHAHOLYOTHIN RD.,  
JOMPOL, CHATUCHAK, BANGKOK 10900

**CALIBRATED BY** : TETNITHI W.

**CALIBRATION DATE** : 11-Mar-22

**APPROVED BY** : [REDACTED]

**ISSUED DATE** : 17-Mar-22

**RECEIVED DATE** : 11-Mar-22

THIS CERTIFICATE MAY NOT BE REPRODUCED OTHER THAN IN FULL EXCEPT WITH THE PRIOR WRITTEN APPROVAL OF  
QUALITY CALIBRATION CO., LTD.





CERTIFICATE No : 22M2567

PAGE : 2 OF 2

## Calibration Report

EQUIPMENT : DIGITAL BALANCE MODEL : XS 105DU  
MANUFACTURER : METTLER TOLEDO S/N : 1126422905  
ID No : BA 05/50 RECEIVED DATE : 11-Mar-22  
AIR PRESSURE : 1008mbar  $\pm$  1mbar CALIBRATION DATE : 11-Mar-22  
AMBIENT TEMPERATURE : 22° C  $\pm$  1° C RELATIVE HUMIDITY : 49 %RH  $\pm$  10 % RH

### CONDITION OF THIS RESULTS OF CALIBRATION

1. THIS INSTRUMENT WAS CALIBRATED BY ACCORDING TO UKAS LAB 14 EDITION 6:2019 BY USING KNOWN WEIGHT STANDARD WEIGHT. THE BALANCE WAS NOT ADJUSTED BEFORE CALIBRATION. THE BALANCE HAS NO ZERO TRACKING FUNCTION. REPEATABILITY WAS MEASURED BY USING 10 REPEATED MEASUREMENTS. LINEARITY WAS MEASURED COVERING 10 POINTS, EVENLY SPREAD OVER THE RANGE. THE INSTRUMENT WAS SET ZERO BEFORE PERFORMING THE LINEARITY TEST. OFF-CENTER LOADING WAS MEASURED BY USING STANDARD WEIGHTS PLACED ON THE PAN AND MOVED TO VARIOUS POSITIONS ON THE PAN.

2. REFERENCE STANDARD INSTRUMENTS :-

INSTRUMENT	MODEL	SERIAL No	CERTIFICATE No	DUE DATE
1) STANDARD WEIGHT SET	E2	QK-I-151	C02210415	09-Feb-23

3. THIS RESULT WAS FOUND ACCURATE AS SHOWN ON DATE AND PLACE OF CALIBRATION ONLY.

4. THIS RESULT EXCLUDE LONG TERM STABILITY OF THE UNIT UNDER CALIBRATION.

5. THIS CERTIFICATE IS TRACEABLE TO THE INTERNATIONAL SYSTEM OF UNIT MAINTAINED AT:-

- NATIONAL INSTITUTE OF METROLOGY (THAILAND) THROUGH CENTRAL BUREAU OF WEIGHTS&MEASURES

### RESULT OF CALIBRATION :- WITHOUT ADJUSTMENT

1. ZERO SETTING FUNCTION : NORMAL

2. TARE FUNCTION : NORMAL

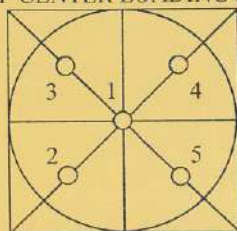
3. REPEATABILITY OF READING AT 20 g WAS 0.000004 g

4. REPEATABILITY OF READING AT 100 g WAS 0.000048 g

5. DEPARTURE FROM NOMINAL VALUE/ LINEARITY

NOMINAL VALUE (g)	BALANCE READING (g)	CORRECTION (g)	UNCERTAINTY ( $\pm$ g)
0.00	0.00000	0.00000	0.000058
0.02	0.01999	0.00001	0.000058
0.10	0.09999	0.00001	0.000059
0.20	0.19999	0.00001	0.000059
0.50	0.50001	-0.00001	0.000058
1.00	1.00001	-0.00001	0.000059
2.00	2.00000	0.00000	0.000059
5.00	5.00001	-0.00001	0.000061
10.00	10.00005	-0.00005	0.000063
20.00	20.00006	-0.00006	0.000069
50.00	50.0000	0.0000	0.00011
100.00	100.0001	-0.0001	0.00019
120.00	120.0001	-0.0001	0.00022

6. OFF CENTER LOADING ERROR



POINT	READING (g)	
1	10.00001	50.0000
2	10.00002	50.0000
3	10.00001	50.0000
4	10.00001	50.0000
5	10.00002	50.0001
OFF-CENTER LOADING	0.00001	0.0001

NOTE: THIS CALIBRATION WAS CARRIED OUT AT THE CUSTOMER'S PLACE AT PRODUCTION AREA

THE REPORTED UNCERTAINTY OF MEASUREMENT WAS BASED ON A STANDARD UNCERTAINTY MULTIPLIED BY A COVERAGE FACTOR  $k=2$ , PROVIDING A LEVEL OF CONFIDENCE APPROXIMATELY 95%.

END OF CALIBRATION REPORT

คุณภาพอากาศจากแหล่งกำเนิด



## CERTIFICATE OF CALIBRATION

### FOR

NOMENCLATURE : VACUUM GAUGE  
MANUFACTURER : HI-LIGHT  
MODEL / TYPE : N/A  
SERIAL NO. : N/A[64-220066-4]  
CLID. NO. : 212201115  
JOB CONTROL NO. : 220720073204

CUSTOMER : S.P.S. CONSULTING SERVICE CO., LTD.  
7 SOI PHAHOLYOTHIN 24 ROAD., JOMPOL,  
CHATUCHAK, BANGKOK 10900

DATE OF RECEIVED : 20 July 2022

DATE OF ISSUED : 22 July 2022

Report of calibration screening must not be taken in part. Except complete. Without the approval of the Calibration Laboratory Co., Ltd.

Calibrated By : Sittipong Pimdee  
Calibration Engineer

Approved By :

22 July 2022

This Calibration Certificate documents the traceability to national standards, which realize the units of measurement according to the International System of Units ( SI )

Certificate No. Q22073204

F3-011-04/01-12

page 1 of 3



@clccalibration

## REPORT OF CALIBRATION

### FOR

NOMENCLATURE : VACUUM GAUGE  
MANUFACTURER : HI-LIGHT  
MODEL / TYPE : N/A  
SERIAL NO. : N/A[64-220066-4]  
DATE OF CALIBRATION : 21 July 2022

---

#### ENVIRONMENT CONDITIONS :

Temperature :  $(23 \pm 2) ^\circ\text{C}$

Relative Humidity :  $(55 \pm 10) \% \text{RH}$

#### PROCEDURE USED :

This instrument was calibrated under procedure No. **CLC-CPPP-05** according to **DKD-R 6-1** as calibration guidelines.

The calibration was performed by direct measurement with Document Process Calibrator and Pressure Module which maintained by the Calibration Laboratory Co., Ltd.

#### REFERENCE STANDARD USED :

Document Process Calibrator, Fluke Model 744 S/N. 9226007 with Pressure Module Model 700PV4 S/N. 19298401.

#### TRACEABILITY :

The measurements are traceable to International System of Units (SI), through National Institute of Metrology (Thailand).  
Certificate No. MP-0196-21, Due Date 17 November 2022.

#### UNCERTAINTY :

The reported uncertainty is based on a standard uncertainty multiplied by coverage factor of  $k = 2$ . It has been evaluated according to the "Calibration of Pressure Gauges (DKD-R 6-1)" which provides a level of confidence approximately 95%.





**CLC**  
Accredited  
ISO/IEC 17025

# CALIBRATION LABORATORY Co., LTD.

2/10-11,14,55 Soi Prasert Manukit 29 Yaek 4, Prasert Manukit Rd., Ladphrao, Bangkok 10230  
Tel. 02-578-0353-4 Fax: 02-578-2672 www.cal-laboratory.com E-mail:sale@cal-laboratory.com



## CONDITION OF CALIBRATION ITEM : GOOD

## MEASUREMENT RESULTS : ( X ) without adjustment ( ) adjustment

The DUC was exercised by applying a known pressure from its zero to full scale 1 times. Then 2 series of known gauge pressure were applied. The STD reading were recorded and the means value were reported in the table below.

### CALIBRATION DATA

#### CORRECTION OF PRESSURE

DUC Test point ( inHg )	STD Reading ( inHg )		Correction ( inHg )	
	Up	Down	Up	Down
0	0.0	0.0	0.0	0.0
-5	-5.1	-5.1	-0.1	-0.1
-10	-10.0	-10.1	0.0	-0.1
-15	-15.0	-15.0	0.0	0.0
-20	-19.9	-20.0	+0.1	0.0
-25	-24.9	-24.9	+0.1	+0.1
-30	-29.9	-29.9	+0.1	+0.1

Uncertainty of measurement  $\pm 0.2$  inHg

Transmitting fluid : Air.

Technical Note. k factor 1 kPa = 0.2952998 inHg

Note. The Scope of Accredited ANAB Certificate No. ACDM-2814 Version 008 Page 36 of 54

**This report is valid for the above stated instrument/s only.**

### End of Certificate ###

Certificate No. Q22073204

F3-011-04/01-12

page 3 of 3



@clccalibration





บริษัท เอส.พี.เอส. คอนซัลติ้ง เซอร์วิส จำกัด  
S.P.S. CONSULTING SERVICE CO., LTD.  
7 ซอยพหลโยธิน 24 ถนนพหลโยธิน แขวงจอมพล เขตจตุจักร กรุงเทพฯ 10900  
7 Soi Phaholyothin 24, Phaholyothin Rd., Jompol, Chatuchak, Bangkok 10900  
Tel : (662) 939-4370-72, Fax : (662) 513-4221, E-mail : sale@spscon.com, www.spscon.com

### Personal Pump Calibration Report

Calibration Method : Dry Cal Primary Flowmeter

Model : Defender 510-H

S/N : 136164

#### Environmental Conditions

Temperature : 25  $\pm$  3  $^{\circ}$ C  
Pressure : 1010  $\pm$  15 mmbar

Personal Pump Data				Calibration Data								
No.	Brand	Model	Serial No.	Date	Flow Rate (ml/min)						Value From Calibration Curve	
					Setting			Actual (Q std.)				
					1	2	3	1	2	3	y	R²
B41	SKC	224-PCXR4	612669	06/07/2022	1,000	1,500	2,000	998	1,496	1,990	0.994x + 3.749	1.000
B42	SKC	224-PCXR4	626041	06/07/2022	1,000	1,500	2,000	1,003	1,498	1,995	0.990x + 12.946	1.000
B43	SKC	224-PCXR4	034636	06/07/2022	1,000	1,500	2,000	999	1,501	1,992	0.991x + 10.805	1.000
B44	SKC	224-PCXR8	529341	06/07/2022	1,000	1,500	2,000	1,002	1,501	2,003	1.012x - 21.857	0.999
B45	SKC	224-PCXR8	529594	04/07/2022	1,000	1,500	2,000	997	1,498	1,989	0.994x + 4.563	1.000
B46	SKC	224-PCXR8	566743	01/07/2022	1,000	1,500	2,000	994	1,504	2,002	1.016x - 33.363	0.999
B47	SKC	224-PCXR8	566747	04/07/2022	1,000	1,500	2,000	1,002	1,500	2,004	1.013x - 25.000	0.999
B48	SKC	224-PCXR8	566753	04/07/2022	1,000	1,500	2,000	999	1,494	1,998	0.999x - 2.194	1.000
B49	SKC	224-PCXR8	566780	04/07/2022	1,000	1,500	2,000	1,003	1,502	2,003	1.012x - 22.626	0.999
B50	SKC	224-PCXR8	500400	04/07/2022	1,000	1,500	2,000	1,002	1,495	2,002	1.001x - 3.458	1.000
B51	SKC	224-PCXR8	500363	04/07/2022	1,000	1,500	2,000	995	1,504	2,000	1.012x - 26.388	0.999
B52	SKC	224-PCXR8	093186	04/07/2022	1,000	1,500	2,000	995	1,497	1,994	0.997x - 1.360	1.000
B53	SKC	224-PCXR8	707670	04/07/2022	1,000	1,500	2,000	1,002	1,499	2,002	1.010x - 20.947	0.999
B54	SKC	224-PCXR3	509821	01/07/2022	1,000	1,500	2,000	993	1,501	2,001	1.016x - 33.878	0.999
B55	SKC	224-PCXR3	510710	01/07/2022	1,000	1,500	2,000	1,000	1,494	1,993	0.993x + 5.432	1.000
B56	SKC	224-PCXR3	511450	01/07/2022	1,000	1,500	2,000	1,002	1,500	2,001	1.011x - 20.804	0.999
B57	SKC	224-PCXR3	510798	01/07/2022	1,000	1,500	2,000	997	1,493	1,998	1.001x - 3.199	1.000
B58	SKC	224-PCXR3	509852	05/07/2022	1,000	1,500	2,000	1,001	1,498	1,999	1.007x - 19.033	0.999
B59	SKC	224-PCXR3	509862	05/07/2022	1,000	1,500	2,000	996	1,503	1,994	0.997x + 3.115	1.000
B60	SKC	224-PCXR3	512655	04/07/2022	1,000	1,500	2,000	1,002	1,500	2,003	1.012x - 23.691	0.999
B61	SKC	224-PCXR3	503915	04/07/2022	1,000	1,500	2,000	994	1,489	1,998	1.004x - 11.866	1.000
B62	SKC	224-PCXR3	505975	04/07/2022	1,000	1,500	2,000	999	1,494	1,996	0.997x - 0.104	1.000
B63	SKC	224-PCXR3	511432	01/07/2022	1,000	1,500	2,000	991	1,501	1,999	1.017x - 35.541	0.999
B64	SKC	224-PCXR3	508302	01/07/2022	1,000	1,500	2,000	997	1,493	1,989	0.982x + 5.947	1.000
B65	SKC	224-PCXR3	508310	04/07/2022	1,000	1,500	2,000	1,002	1,500	2,003	1.012x - 22.949	0.999
B66	SKC	224-PCXR3	509861	05/07/2022	1,000	1,500	2,000	1,002	1,491	1,991	0.988x + 13.425	1.000
B67	SKC	224-PCXR3	506295	01/07/2022	1,000	1,500	2,000	993	1,507	2,004	1.017x - 32.945	0.999
B68	SKC	224-PCXR3	505872	01/07/2022	1,000	1,500	2,000	1,002	1,491	1,997	0.994x + 5.755	1.000
B69	SKC	224-PCXR3	508375	01/07/2022	1,000	1,500	2,000	1,001	1,500	2,000	1.010x - 21.569	0.999
B70	SKC	224-PCXR3	510623	04/07/2022	1,000	1,500	2,000	992	1,503	1,997	1.002x - 6.533	1.000
B71	SKC	224-PCXR3	508367	05/07/2022	1,000	1,500	2,000	990	1,506	2,002	1.018x - 37.184	0.999
B72	SKC	224-PCXR3	505977	05/07/2022	1,000	1,500	2,000	1,001	1,498	1,993	0.993x + 5.652	1.000
B73	SKC	224-PCXR3	512606	04/07/2022	1,000	1,500	2,000	1,001	1,501	2,005	1.013x - 24.278	0.999
B74	SKC	224-PCXR3	505993	01/07/2022	1,000	1,500	2,000	996	1,495	1,994	1.000x - 4.682	1.000
B75	SKC	224-PCXR3	509820	01/07/2022	1,000	1,500	2,000	996	1,499	1,990	0.994x + 3.625	1.000
B76	SKC	224-PCXR3	509811	04/07/2022	1,000	1,500	2,000	993	1,498	1,998	1.007x - 14.602	1.000
B77	SKC	224-PCXR3	508301	04/07/2022	1,000	1,500	2,000	1,000	1,501	2,004	1.014x - 26.842	0.999
B78	SKC	224-PCXR3	510877	04/07/2022	1,000	1,500	2,000	996	1,503	1,998	1.012x - 27.121	0.999
B79	SKC	224-PCXR3	510920	04/07/2022	1,000	1,500	2,000	994	1,493	1,994	0.999x - 3.506	1.000





# บริษัท เอส.พี.เอส. คอนซัลติ้ง เซอร์วิส จำกัด

## S.P.S. CONSULTING SERVICE CO., LTD.

7 ซอยพหลโยธิน 24 ถนนพหลโยธิน แขวงจอมพล เขตจตุจักร กรุงเทพฯ 10900  
7 Soi Phaholyothin 24, Phaholyothin Rd., Jompol, Chaluchak, Bangkok 10900  
Tel : (662) 939-4370-72, Fax : (662) 513-4221, E-mail : sale@spscon.com., www.spscon.com

### Personal Pump Calibration Report

Calibration Method : Dry Cal Primary Flowmeter

Model : Defender 510-H

S/N : 136164

#### Environmental Conditions

Temperature : 25  $\pm$  3  $^{\circ}$ C  
Pressure : 1010  $\pm$  15 mmbar

Personal Pump Data				Calibration Data								
No.	Brand	Model	Serial No.	Date	Flow Rate (ml/min)						Value From Calibration Curve	
					Setting			Actual (Q std.)				
					1	2	3	1	2	3	y	R²
R01	SKC	224-PCXR4	602467	01/07/2022	1,000	1,500	2,000	993	1,508	2,004	1.020x - 38.744	0.998
R02	SKC	224-PCXR4	626450	01/07/2022	1,000	2,000	3,000	998	1,499	1,990	0.989x + 12.348	1.000
R03	SKC	224-PCXR4	691592	04/07/2022	1,000	1,500	2,000	1,003	1,500	2,004	1.012x - 22.080	0.999
R04	SKC	224-PCXR4	691672	01/07/2022	1,000	1,500	2,000	996	1,493	1,993	0.997x - 1.763	1.000
R05	SKC	224-PCXR4	798470	04/07/2022	1,000	1,500	2,000	994	1,506	1,999	1.013x - 30.077	0.999
R06	SKC	224-PCXR4	798456	04/07/2022	1,000	1,500	2,000	994	1,498	1,994	1.002x - 7.319	1.000
R07	SKC	224-PCXR4	798480	04/07/2022	1,000	1,500	2,000	994	1,490	2,000	1.008x - 17.031	1.000
R08	SKC	224-PCXR4	883215	05/07/2022	1,000	1,500	2,000	1,001	1,502	2,005	1.015x - 26.148	0.999
R09	SKC	224-PCXR4	034650	01/07/2022	1,000	1,500	2,000	991	1,504	2,002	1.018x - 36.777	0.999
R10	SKC	224-PCXR4	091765	04/07/2022	1,000	1,500	2,000	996	1,512	1,994	1.000x + 0.100	1.000
R11	SKC	224-PCXR4	091763	01/07/2022	1,000	1,500	2,000	1,000	1,499	2,002	1.013x - 25.598	0.999
R12	SKC	224-PCXR4	091568	04/07/2022	1,000	1,500	2,000	997	1,501	1,999	1.001x - 4.866	1.000
R13	SKC	224-PCXR4	091638	04/07/2022	1,000	1,500	2,000	1,002	1,498	1,993	0.991x + 10.115	1.000
R14	SKC	224-PCXR4	091764	04/07/2022	1,000	1,500	2,000	994	1,502	1,999	1.013x - 29.654	0.999
R15	SKC	224-PCXR8	529457	01/07/2022	1,000	1,500	2,000	1,001	1,500	2,004	1.013x - 25.263	0.999
R16	SKC	224-PCXR8	529643	01/07/2022	1,000	1,500	2,000	998	1,497	1,994	0.997x - 0.379	1.000
R17	SKC	224-PCXR8	529645	01/07/2022	1,000	1,500	2,000	994	1,509	2,000	1.014x - 30.173	0.999
R18	SKC	224-PCXR8	566756	04/07/2022	1,000	1,500	2,000	991	1,496	1,998	1.001x - 6.880	1.000
R19	SKC	224-PCXR8	566802	01/07/2022	1,000	1,500	2,000	1,003	1,499	2,000	1.010x - 19.831	0.999
R20	SKC	224-PCXR8	529089	01/07/2022	1,000	1,500	2,000	990	1,500	2,003	1.020x - 40.235	0.999
R21	SKC	224-PCXR8	665728	04/07/2022	1,000	1,500	2,000	998	1,493	1,999	1.001x - 5.604	1.000
R22	SKC	224-PCXR8	707444	04/07/2022	1,000	1,500	2,000	1,002	1,500	2,001	1.011x - 21.494	0.999
R23	SKC	224-PCXR8	761067	04/07/2022	1,000	1,500	2,000	998	1,494	1,992	0.994x + 2.896	1.000
R24	SKC	224-PCXR8	707893	01/07/2022	1,000	1,500	2,000	996	1,505	2,000	1.013x - 27.843	0.999
R25	SKC	224-PCXR8	761052	04/07/2022	1,000	1,500	2,000	998	1,500	1,993	0.993x + 6.633	1.000
R26	SKC	224-PCXR8	707956	04/07/2022	1,000	1,500	2,000	1,002	1,500	2,004	1.013x - 24.298	0.999
R27	SKC	224-PCXR8	707398	01/07/2022	1,000	1,500	2,000	996	1,503	2,001	1.013x - 28.844	0.999
R28	SKC	224-PCXR8	707481	04/07/2022	1,000	1,500	2,000	1,004	1,500	2,003	1.010x - 19.727	0.999
R29	SKC	224-PCXR8	707402	01/07/2022	1,000	1,500	2,000	1,005	1,491	1,991	0.988x + 13.928	1.000
R30	SKC	224-PCXR8	093811	01/07/2022	1,000	1,500	2,000	998	1,495	1,994	0.998x - 1.149	1.000
R31	SKC	224-PCXR8	093183	01/07/2022	1,000	1,500	2,000	1,001	1,501	2,001	1.012x - 23.161	0.999
R32	SKC	224-PCXR8	671950	04/07/2022	1,000	1,500	2,000	1,000	1,498	1,994	0.993x + 7.961	1.000
R33	SKC	224-PCXR4	626254	04/07/2022	1,000	1,500	2,000	992	1,502	1,999	1.017x - 34.540	0.999
R34	SKC	224-PCXR4	626131	04/07/2022	1,000	1,500	2,000	1,002	1,498	2,004	1.013x - 25.091	0.999
R35	SKC	224-PCXR8	707460	04/07/2022	1,000	1,500	2,000	998	1,498	1,995	0.994x + 5.472	1.000
R36	SKC	224-PCXR8	707446	01/07/2022	1,000	1,500	2,000	1,003	1,500	2,001	1.009x - 19.272	0.999
R37	SKC	224-PCXR8	707432	01/07/2022	1,000	1,500	2,000	999	1,499	1,998	0.998x + 0.243	1.000
R38	SKC	224-PCXR8	707349	01/07/2022	1,000	1,500	2,000	996	1,500	2,002	1.015x - 32.039	0.999
R39	SKC	224-PCXR8	761095	04/07/2022	1,000	1,500	2,000	1,001	1,496	1,994	0.997x + 2.333	1.000



บริษัท เอส.พี.เอส. คอนซัลติ้ง เซอร์วิส จำกัด

S.P.S. CONSULTING SERVICE CO., LTD.

7 ซอยพหลโยธิน 24 ถนนพหลโยธิน แขวงจอมพล เขตจตุจักร กรุงเทพฯ 10900

7 Soi Phaholyothin 24, Phaholyothin Rd., Jompol, Chaluchak, Bangkok 10900

Tel : (662) 939-4370-72, Fax : (662) 513-4221, E-mail : sale@spscon.com, www.spscon.com

Rotameter Calibration Report (For Personal Pump Low Flow Adjust)

Calibration Method : Dry Cal Primary Flowmeter

Model : Defender 510-H

S/N : 136164

Calibration Data

Rotameter Data			Calibration Data								
No.	Brand	Model	Date	Flow Rate (ml/min)						Value From Calibration Curve	
				Flow Rate (Reading)			Actual (Q std.)				
				1	2	3	1	2	3	y	R <sup>2</sup>
L-R01	Dwyer	VFA-21	04/07/2022	50	100	200	50.2	101.0	203.5	0.988x + 2.342	1.000
L-R02	Dwyer	VFA-21	04/07/2022	50	100	200	50.1	101.3	200.5	1.006x - 0.768	0.999
L-R03	Dwyer	VFA-21	04/07/2022	50	100	200	50.5	99.8	202.3	1.016x - 0.811	1.000
L-R04	Dwyer	VFA-21	01/07/2022	50	100	200	50.2	100.9	200.6	1.009x - 1.208	0.999
L-R05	Dwyer	VFA-21	01/07/2022	50	100	200	50.2	100.4	203.0	0.991x + 1.666	1.000
L-R06	Dwyer	VFA-21	04/07/2022	50	100	200	50.6	99.1	201.5	1.002x - 0.007	1.000





บริษัท เอส.พี.เอส. คอนซัลติ้ง เซอร์วิส จำกัด  
S.P.S. CONSULTING SERVICE CO., LTD.  
7 ซอยพหลโยธิน 24 ถนนพหลโยธิน แขวงจตุจักร กรุงเทพฯ 10900  
7 Soi Phaholyothin 24, Phaholyothin Rd., Jompol, Chatuchak, Bangkok 10900  
Tel : (662) 939-4370-72, Fax : (662) 513-4221, E-mail : sale@spscon.com., www.spscon.com

Calibration Report Total Hydrocarbon Analyzer			
Date :	01 September 2022	Brand :	HORIBA
		Model :	APHA-360CE
No.	B01	Serial No.	4211954001
Calibrator (Dilution System)			
Brand :	API	Model :	700
Last Cal. Date :	04 August 2022	Serial No. :	911
Reference Standard Gas			
Standard Gas :	Methane (CH <sub>4</sub> )	Cylinder No. :	D595075
Certified Date :	17 March 2015	Expired Date :	17 March 2023
		Cylinder Conc. :	456 ppm
Calibrating Condition			
Pressure	1011 mmbar	Temp.	24.5 °C
		% RH	49
		Start Time :	9:00 AM
Pre-Calibration Checks			
Change Particulate Filter	Yes	Station Temp :	25.0 °C
Leak Test	Yes		
Calibration Setting			
Span Set Point	Initial Reading (Before Adj)		Final Reading (After Adj)
	Expected Concentration (PPM)	Analyzer Response (PPM)	Analyzer Response (PPM)
Zero	0	-0.10	0
Span	10	10.02	10
Calibration Setting (Final)			
Span Instrument Gain:	0.997	Finish Time:	10:00 AM
APHA-360 Total Hydrocarbon Analyzer			
Test Values	Observed Value	Units	Nominal Range
Signal (CH <sub>4</sub> )	910.4	mV	800-1,350
Signal (THC)	915.6	mV	800-1,350
Detector	77.8	kPa	((Pressure Air/1013)x100)-20 ± 4 kPa
Purifier	19.0	kPa	8 - 25
NMC	258.9	°C	260 ± 10
Bypass	0.9	L / min	0.9 ± 0.3
Over Flow	0.8	L / Min	0.8

# SITHIPHORN ASSOCIATES CO.,LTD. CALIBRATION LABORATORY



451-451/1 Sirinthorn Rd.,Bangbumru, Bangplud Bangkok 10700 THAILAND.  
Tel.0-2435-8800 Fax.0-2433-1679 e-mail:cal-center@sithiphorn.com http://www.sithiphorn.com

NSC-TISI-TIS 17025  
CALIBRATION 0394

Cert. No. : SP22018

Pages 1 of 3

## Calibration Certificate

**Equipment :** UV-VIS SPECTROPHOTOMETER  
**Manufacturer :** PERKINELMER  
**Model :** LAMBDA 25  
**Serial No.:** 501S14123010  
**ID No.:** SP03/58  
**Calibration Mode :** WAVELENGTH ACCURACY  
PHOTOMETRIC ACCURACY  
  
**Condition As Found :** GOOD  
  
**Customer :** S.P.S. CONSULTING SERVICE CO., LTD.  
7 SOI PHAHOLYOTHIN 24, PHAHOLYOTHIN ROAD,  
CHOMPHON, CHATUCHAK,  
BANGKOK 10900, THAILAND.  
  
**Location :** ORGANIC LABORATORY IV  
  
**Ambient Temperature :** ( 24.4 ± 5 ) °C  
**Relative Humidity :** ( 60.1 ± 25 ) %  
  
**Received Date :** 30 AUGUST 2022  
**Calibration Date :** 30 AUGUST 2022  
**Date of Issue :** 31 AUGUST 2022

**Calibrated by :**

Nathakorn Pisutpaisan

**Approved by :**



This certificate is issued in accordance with the requirements of ISO/IEC 17025 standard, may not be reproduced other than in full, except with the prior written approval of the head of Calibration Laboratory.

**Continuation of Calibration Certificate**

**Cert. No. : SP22018**

**Job No. : VC65SP0008**

**Pages : 2 of 3**

**Calibration Method :**

This instrument was calibrated by using on-site calibration procedure In-house method : CP-SP-01

The calibration procedure to direct measurement wavelength accuracy by using wavelength standard solution, Photometric accuracy by using absorbance standard filter and absorbance standard solution

The calibration procedure used was based on ASTM E275-01,ASTM E925-02

**Condition of this result of calibration :**

**1. Certified reference materials**

<u>Material</u>	<u>Ref. type</u>	<u>Cell serial No.</u>	<u>Cert. No.</u>	<u>Due Date</u>
Holmium liquid	RM-HL	29706	87569	13/10/2022
Didymium liquid	RM-DL	28912	87588	15/10/2022
Neutral density filter	RM-1N2N3N	13877	87600	15/10/2022
Potassium dichromate solutions	RM-0204060810	14204	87614	16/10/2022
Potassium Iodide solution	-	KI-0701-001	CI-0090-22	08/04/2024

**2. This result of calibration was found accurate as shown on date and place of calibration only.**

**3. This certificate is traceable to the international system of unit maintained at :**

3.1 The UK National Physical Laboratory (NPL)

3.2 The National Institute of Standards and Technology,NIST.

**Result of calibration : Wavelength Accuracy**

(Without adjustment)

<b>Material</b>	<b>Certified Values of Reference Material (nm)</b>	<b>UUC* Reading (nm)</b>	<b>Error (nm)</b>	<b>Uncertainty ± (nm)</b>	<b>k Factor</b>
<b>RM-HL</b>	278.13	278.3	0.17	0.16	2.00
	361.25	361.4	0.15	0.16	2.00
	467.82	467.8	-0.02	0.16	2.00
	536.56	536.5	-0.06	0.16	2.00
	640.50	640.5	0.00	0.16	2.00
<b>RM-DL</b>	740.09	740.0	-0.09	0.16	2.00
	864.94	865.2	0.26	0.16	2.00

UUC\* = Unit Under Calibration

Continuation of Calibration Certificate

Cert. No. : SP22018

Job No. : VC65SP0008

Pages : 3 of 3

**Result of calibration : Photometric Accuracy**

(Without adjustment)

Material	Wavelength (nm)	Filter: S/N	Nominal Absorbance (A)	Certified Absorbance (A)	UUC* Reading Absorbance (A)	Error (A)	Uncertainty ± (A)	k Factor
Neutral Density glass filter	440.0	29360	1.0	1.0524	1.0539	0.0015	0.0028	2.00
		29914	0.7	0.7454	0.7459	0.0005	0.0029	2.00
		29381	0.5	0.5426	0.5426	0.0000	0.0028	2.00
	546.1	29360	1.0	0.9822	0.9810	-0.0012	0.0028	2.00
		29914	0.7	0.6962	0.6960	-0.0002	0.0028	2.00
		29381	0.5	0.5076	0.5070	-0.0006	0.0029	2.00
	590.0	29360	1.0	1.0221	1.0202	-0.0019	0.0028	2.00
		29914	0.7	0.7238	0.7230	-0.0008	0.0029	2.00
		29381	0.5	0.5364	0.5360	-0.0004	0.0031	2.00
	635.0	29360	1.0	0.9751	0.9732	-0.0019	0.0028	2.00
		29914	0.7	0.6912	0.6902	-0.0010	0.0029	2.00
		29381	0.5	0.5214	0.5210	-0.0004	0.0032	2.00
Material	Wavelength (nm)	Solution (mg/l)	Certified Absorbance (A)	UUC* Reading Absorbance (A)	Error (A)	Uncertainty ± (A)	k Factor	
RM-0204060810	235.0	20	0.2436	0.2419	-0.0017	0.0101	2.00	
		40	0.4905	0.4855	-0.0050	0.0115	2.00	
		60	0.7453	0.7388	-0.0065	0.0067	2.00	
		80	0.9920	0.9839	-0.0081	0.0071	2.00	
		100	1.2487	1.2414	-0.0073	0.0073	2.00	

UUC\* = Unit Under Calibration

Condition of this result of calibration : Spectrophotometer PERKINELMER Model Lambda 25 S/N 501S141230

Resolution of Wavelength Mode 0.1 nm

Resolution of Photometric Mode 0.0001 A

Parameter Setting

Measurement Mode Wavelength, Absorbance

Wavelength Scan 1100 nm-190 nm

Scanning Speed 7.5 nm/min

Data Pitch 0.1 nm

Band width(Wavelength) 1.0 nm

Band width(Vis) 1.0 nm

Band width(Uv) 1.0 nm

Stray Light\*\* UUC\* Reading at 220 nm

Transmission T(%)	Absorbance(A)
0.0107	3.9886

\*\*Specific Acceptance :

Transmission  $\leq$  1.0 T(%), Absorbance  $\geq$  2.0 A

\*\*Stray light not TISI Accredited

The reported uncertainty is based on a standard uncertainty multiplied by a coverage factor  $k$ , providing a level of confidence of approximately 95%

End of Calibration Certificate





## Certificate of Calibration

**Aquion : Anion (ID#894)**

This certificate is to verify that instrument below are calibrated  
by Archemica Lab Co.,Ltd.

AQUION S/N : 190840059

AS-DV S/N : 190915235

for

**S.P.S. Consulting Service Co., Ltd.**



Operator Signature : 

Date : Jan 5, 2022

(Mr. Channarong Khiao-Un)

Test Engineer

คุณภาพน้ำ



TECHNOLOGY PROMOTION ASSOCIATION (THAILAND-JAPAN)  
CORPORATE SERVICES 3: EQUIPMENT CALIBRATION AND TESTING SERVICES  
534/4 PATTANAKARN ROAD SOI 18, SUANLUANG, SUANLUANG BANGKOK 10250  
TEL. 0-2717-3000-27 FAX. 0-2719-9484



Cert.No.: 21CH1216

Page.: 1 of 2

## Certificate of Calibration

**Equipment :** pH Meter  
**Manufacturer :** HANNA  
**Model :** HI 3512  
**Serial No. :** 08685754  
**ID No. :** -  
**Condition As-Received:** Used Item  
**Received Date :** 14 September 2021  
**Calibration Date :** 16 September 2021  
**Reference :** 2109-0508WN-1  
**Submitted by :** S.P.S. Consulting Service Co.,Ltd.  
7 Phaholyothin 24, Phaholyothin Road,  
Jompol, Chatuchak, Bangkok10900  
**Ambient Temperature :** (25 ± 2.5) °C  
**Relative Humidity :** (50 ± 15) %  
**Calibration Procedure :** In - house method :  
- CP-CH5 by direct measurement with standard  
voltage calibrator and direct measurement  
with certified reference material (CRM)

**Calibrated by :** Walalak Sirithean

**Approved by :**

Approved Signatory

- (✓) Malee Butkruea  
( ) Saithip Meangmai  
( ) Warakorn Lernagtrakul

**Issue Date :** 22 September 2021

The Uncertainties are for a confidence probability of approximately 95%

This certificate may not be reproduced other than in full, except with the prior written  
Approval of the head of Corporate Services 3 : Equipment Calibration and Testing Services.

A 0032410





Cert. No.: 21CH1216

Page.: 2 of 2

**Condition of this calibration result**

1. Reference Standard Instrument : -

<u>Instrument</u>	<u>Serial No.</u>	<u>ID No.</u>	<u>Cert. No.</u>	<u>Due Date</u>
1) Document Process Calibrator	46530031	130RC098	20E3666	14 Oct 2021

This certification is traceable to the International System of Unit maintained at:-

- Traceable to National Institute of Metrology (Thailand), NIMT

2. Certified Reference Materials : The measurement results are traceable to SI through CPA chem Ltd.,  
ANSI-ASQ National Accreditation Board, Accredited No. AR-1835

<u>Buffer Solution</u>	<u>Manufacturer</u>	<u>Lot No.</u>	<u>Exp. date</u>
pH 4.008	CPA chem	754028	28 June 2023
pH 6.985	CPA chem	725927	12 Jan 2022
pH 10.015	CPA chem	761018	02 Aug 2022

3. This certificate is valid only to the item calibrated on date and place of calibration.

**Calibration Results****Function : mV Measurement**

Performing standard curve by Fluke at pH (4,7,10)

Unit Under Calibration	Nominal Value	Standard Voltage Input	Actual Reading		Uncertainty of Measurement ( $\pm$ mV)	Coverage factor <i>k</i>
	pH	mV	mV	pH		
pH Meter S/N.: 08685754	4.000	177.48	177.9	4.000	0.058	2.00
	7.000	0.00	0.4	7.000	0.058	2.00
	10.000	-177.48	-177.2	10.000	0.058	2.00

**Function : pH Measurement**

Performing three buffers standard curve by using buffer nominal pH (4,7,10)

Unit Under Calibration	Standard pH Buffer Solution	Actual pH Reading	Actual mV Reading (mV)	Uncertainty of pH measurement ( $\pm$ )	Coverage factor <i>k</i>
pH Electrode S/N.: 061416CM	4.008	4.008	169.2	0.0046	2.00
	6.985	6.985	-4.4	0.0075	2.00
	10.015	10.013	-178.9	0.013	2.05

The reported uncertainty of measurement was based on a standard uncertainty multiplied by a coverage factor *k*, providing a level of confidence of approximately 95 %.

-o0o-



**QUALITY CALIBRATION CO.,LTD.**

235 Petchkasem 63/2 Road, Laksong, Bangkae, Bangkok 10160

Tel (662) 421-5402, (662) 444-0152-3, Fax (662) 809-4584



CERTIFICATE No : 22E9693

REFERENCE No : 66476-1

PAGE : 1 OF 3

**Certificate of Calibration**

**EQUIPMENT** : pH METER

**MANUFACTURER** : HANNA

**MODEL** : HI 3512

**SERIAL No** : TH118035

**ID No** : pH 04/56

**CONDITION AS RECEIVED** : USED ITEM

**SUBMITTED BY** : S.P.S. CONSULTING SERVICE CO., LTD.  
7 SOI PHAHOLYOTHIN 24, PHAHOLYOTHIN RD.,  
JOMPOL, CHATUCHAK, BANGKOK 10900

**CALIBRATED BY** : ATSAWIN Y.

**CALIBRATION DATE** : 15-Sep-22

**APPROVED BY** : [REDACTED]  
PONGSAK J.

**ISSUED DATE** : 15-Sep-22

**RECEIVED DATE** : 14-Sep-22

THIS CERTIFICATE MAY NOT BE REPRODUCED OTHER THAN IN FULL EXCEPT WITH THE PRIOR WRITTEN APPROVAL OF  
QUALITY CALIBRATION CO., LTD.



**QUALITY CALIBRATION CO.,LTD.**

235 Petchkasem 63/2 Road, Laksong, Bangkai, Bangkok 10160

Tel (662) 421-5402, (662) 444-0152-3, Fax (662) 809-4584

CERTIFICATE No : 22E9693

PAGE : 2 OF 3

**Calibration Report**

EQUIPMENT : pH METER  
MANUFACTURER : HANNA  
ID No : pH 04/56  
RECEIVED DATE : 14-Sep-22  
AMBIENT TEMPERATURE : 20 °C ± 1 °C

MODEL : HI 3512  
SERIAL NUMBER : TH118035  
CALIBRATION DATE : 15-Sep-22  
RELATIVE HUMIDITY : 50 % RH ± 10% RH

**CONDITION OF THIS RESULTS OF CALIBRATION**

1. THIS INSTRUMENT WAS CALIBRATED BY DIRECT MEASUREMENT METHOD BASED ON WI-TQ-062 AND WI-TQ-063. THE DISPLAY UNIT WAS TESTED BY GENERATING STANDARD VOLTAGE TO THE UNIT AND READ THE VALUE COMPARED WITH CALCULATED VALUE. THE DISPLAY AND ELECTRODE WAS CALIBRATED BY USING STANDARD pH BUFFER
2. REFERENCE STANDARD INSTRUMENTS :-

<u>INSTRUMENT</u>	<u>MODEL</u>	<u>SERIAL No/ LOT No</u>	<u>CERTIFICATE No</u>	<u>DUE DATE</u>
1) pH STANDARD SOLUTION	00651-06	CC719181	4880-12119147	05-Apr-23
2) pH STANDARD SOLUTION	00651-08	CC718727	4881-12110709	31-Mar-23
3) pH STANDARD SOLUTION	00651-10	CC717045	4882-12065386	17-Mar-23
4) PROCESS CALIBRATOR	CA150	91S6079	22E1145	31-Mar-23
5) BATH	260014	1247 48074	22T9870	13-Sep-23
6) THERMOMETER WITH PROBE	421504	55000379	22T9904	13-Sep-23

3. THIS RESULT WAS FOUND ACCURATE AS SHOWN ON DATE AND PLACE OF CALIBRATION ONLY.
4. THIS RESULT EXCLUDE LONG TERM STABILITY OF THE UNIT UNDER CALIBRATION.
5. THIS CERTIFICATE IS TRACEABLE TO SI UNIT MAINTAINED AT :-
  - NATIONAL INSTITUTE OF STANDARD AND TECHNOLOGY, USA.
  - NATIONAL INSTITUTE OF METROLOGY (THAILAND)

**RESULT OF CALIBRATION : ADJUSTMENT****1. DISPLAY UNIT ONLY**SLOPE FACTOR  $k = 2.303 \text{ RT/F} = 59 \text{ mV/pH}$ 

mV APPLIED	UUC READING (mV)	CORRECTION (mV)	UUC READING (pH)	UNCERTAINTY OF MEASUREMENT (± mV)	COVERAGE FACTOR k
414.11	414.8	-0.69	-0.171	0.14	2.0
354.95	355.6	-0.65	0.860	0.14	2.0
295.80	296.4	-0.60	1.892	0.14	2.0
236.64	237.2	-0.56	2.922	0.14	2.0
177.48	178.0	-0.52	3.954	0.14	2.0
118.32	118.8	-0.48	4.985	0.14	2.0
59.16	59.7	-0.54	6.016	0.14	2.0
0.00	0.5	-0.50	7.049	0.14	2.0
-59.16	-58.8	-0.36	8.136	0.14	2.0
-118.32	-117.9	-0.42	9.223	0.14	2.0
-177.48	-177.1	-0.38	10.311	0.14	2.0
-236.64	-236.3	-0.34	11.399	0.14	2.0
-295.80	-295.5	-0.30	12.487	0.14	2.0
-354.95	-354.7	-0.25	13.575	0.14	2.0
-414.11	-413.9	-0.21	14.662	0.14	2.0

END OF CALIBRATION REPORT PAGE 2 OF 3



**QUALITY CALIBRATION CO.,LTD.**

235 Petchkasem 63/2 Road, Laksong, Bangkae, Bangkok 10160

Tel (662) 421-5402, (662) 444-0152-3, Fax (662) 809-4584

CERTIFICATE No : 22E9693

PAGE : 3 OF 3

**Calibration Report****RESULT OF CALIBRATION (CONTINUE) :****2. DISPLAY UNIT WITH pH ELECTRODE S/N: 09081C6M**

STANDARD pH BUFFER SOLUTION (pH)	UUC READING (pH)	CORRECTION (pH)	VALUE BEFORE ADJUSTMENT	UNCERTAINTY OF MEASUREMENT ( $\pm$ pH)	COVERAGE FACTOR k
4.007	4.007	0.000	3.996	0.012	2.0
7.004	7.006	-0.002	6.944	0.012	2.0
10.016	10.012	0.004	10.194	0.014	2.0

**3. DISPLAY UNIT WITH TEMPERATURE**

STANDARD READING ( $^{\circ}$ C)	UUC READING ( $^{\circ}$ C)	CORRECTION ( $^{\circ}$ C)	VALUE BEFORE ADJUSTMENT	UNCERTAINTY OF MEASUREMENT ( $\pm$ $^{\circ}$ C)	COVERAGE FACTOR k
25.003	25.0	0.003	---	0.0085	2.0

**4. PERCENT SLOPE 100%**

UUC : UNIT UNDER CALIBRATION

THE REPORTED UNCERTAINTY OF MEASUREMENT WAS BASED ON A STANDARD UNCERTAINTY MULTIPLIED BY A COVERAGE FACTOR k, PROVIDING A LEVEL OF CONFIDENCE APPROXIMATELY 95%.

END OF CALIBRATION REPORT

## Certificate of Calibration

**Certificate No. :** 65-400210-1

**Page : 1 of 2**

**Submitted by :** S. P. S Consulting Service Co.,Ltd.

7 Soi Phaholyothin 24, Phaholyothin Rd., Jompol, Chatuchak, Bangkok 10900

**Equipment :** Liquid in Glass Thermometer

**Manufacturer :** SK

**Model :** N/A

**Range :** 0 °C to 100 °C

**Resolution :** 1 °C

**Serial No. :** N/A

**Immersion :** Total

**ID No. :** TM21/59

**Environment :** Ambient Temperature : (23 ± 2) °C

Relative Humidity : (50 ± 15) %

Line Voltage : (220 ± 22) VAC

**Date of Received :** 19 April 2022

**Date of Calibration :** 23 April 2022

**Date of Issue :** 23 April 2022

**Calibrated by :** Chortip Samchusri

**Calibration Method :** This instrument was calibrated by In-house method comparison technique CAL-M4001 based on ASTM E77-07 by compared with PRT in the liquid bath at the constant controlled temperature.

The temperature scale used was based on ITS-90

**Reference Standard Instruments :** This certification is traceable to the International System of Units

1. Platinum Resistance Thermometer (PRT)

ID No.	Cert. No.	Due Date	Traceability
400001	TT-0016-22	07 Feb 2024	National Institute of Metrology Thailand (NIMT)

2. Standard Digital Thermometer

ID No.	Cert. No.	Due Date	Traceability
400003	21E1850	14 Jun 2023	National Institute of Metrology Thailand (NIMT)
400004	21E1850	14 Jun 2023	National Institute of Metrology Thailand (NIMT)

Approved by :

Supervisor

The Uncertainties are for a confidence probability of approximately 95%

This certificate may not be reproduced other than in full except with the prior written approval of the Calibratech Co.,Ltd.





## Certificate of Calibration

**Certificate No. :** 65-400210-1

**Page : 2 of 2**

**Result of Calibration :** Without Adjustment

**UUC Condition As-Received :** Good

**Function :** Temperature measurement

Ice point check : UUC\* reading 0 °C Standard reading 0.6439 °C

Standard Reading ( °C )	UUC Reading ( °C )	Correction ( °C )	Uncertainty ( ± °C )
20.6690	20	0.7	0.31

### Remark

UUC : Unit Under Calibration

This result of calibration was found accurate as shown on date and place of calibration only.

This reported uncertainty of measurement was based on a standard uncertainty multiplied by a coverage factor  $k = 2$ , providing a level of confidence of approximately 95%

- o0o -





CERTIFICATE No : 22M2569

REFERENCE No : 64386-3

PAGE : 1 OF 2

## Certificate of Calibration

EQUIPMENT : DIGITAL BALANCE

MANUFACTURER : SARTORIUS

MODEL : BSA224S-CW

SERIAL No : 36591843

ID No : BA 09/61

CONDITION AS RECEIVED : USED ITEM

SUBMITTED BY : S.P.S. CONSULTING SERVICE CO., LTD.  
7 SOI PHAHOLYOTHIN 24, PHAHOLYOTHIN RD.,  
JOMPOL, CHATUCHAK, BANGKOK 10900

CALIBRATED BY : TETNITHI W.

CALIBRATION DATE : 11-Mar-22

APPROVED BY : 

ISSUED DATE : 17-Mar-22

RECEIVED DATE : 11-Mar-22





CERTIFICATE No : 22M2569

PAGE : 2 OF 2

## Calibration Report

EQUIPMENT : DIGITAL BALANCE MODEL : BSA224S-CW  
MANUFACTURER : SARTORIUS S/N : 36591843  
ID No : BA 09/61 RECEIVED DATE : 11-Mar-22  
AIR PRESSURE : 1008mbar  $\pm$  1mbar CALIBRATION DATE : 11-Mar-22  
AMBIENT TEMPERATURE : 22° C  $\pm$  1° C RELATIVE HUMIDITY : 51 %RH  $\pm$  10 % RH

### CONDITION OF THIS RESULTS OF CALIBRATION

1. THIS INSTRUMENT WAS CALIBRATED BY ACCORDING TO UKAS LAB 14 EDITION 6:2019 BY USING KNOWN WEIGHT STANDARD WEIGHT. THE BALANCE WAS ADJUSTED USING WEIGHT OF QUALITY CALIBRATION TO ADJUST. THE BALANCE HAS NO ZERO TRACKING FUNCTION. REPEATABILITY WAS MEASURED BY USING 10 REPEATED MEASUREMENTS. LINEARITY WAS MEASURED COVERING 10 POINTS, EVENLY SPREAD OVER THE RANGE. THE INSTRUMENT WAS SET ZERO BEFORE PERFORMING THE LINEARITY TEST. OFF-CENTER LOADING WAS MEASURED BY USING STANDARD WEIGHTS PLACED ON THE PAN AND MOVED TO VARIOUS POSITIONS ON THE PAN.

### 2. REFERENCE STANDARD INSTRUMENTS :-

<u>INSTRUMENT</u>	<u>MODEL</u>	<u>SERIAL No</u>	<u>CERTIFICATE No</u>	<u>DUE DATE</u>
1) STANDARD WEIGHT SET	E2	QK-I-151	C02210415	09-Feb-23

3. THIS RESULT WAS FOUND ACCURATE AS SHOWN ON DATE AND PLACE OF CALIBRATION ONLY.

4. THIS RESULT EXCLUDE LONG TERM STABILITY OF THE UNIT UNDER CALIBRATION.

5. THIS CERTIFICATE IS TRACEABLE TO THE INTERNATIONAL SYSTEM OF UNIT MAINTAINED AT:-

- NATIONAL INSTITUTE OF METROLOGY (THAILAND) THROUGH CENTRAL BUREAU OF WEIGHTS&MEASURES

### RESULT OF CALIBRATION :- WITHOUT ADJUSTMENT

1. ZERO SETTING FUNCTION : NORMAL

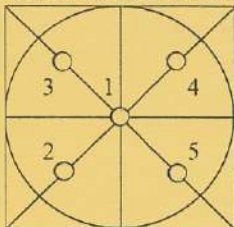
2. TARE FUNCTION : NORMAL

3. REPEATABILITY OF READING AT 200 g WAS 0.000048 g

4. DEPARTURE FROM NOMINAL VALUE/ LINEARITY

NOMINAL VALUE (g)	BALANCE READING (g)	CORRECTION (g)	UNCERTAINTY ( $\pm$ g)
0.00	0.0000	0.0000	0.000078
0.10	0.1000	0.0000	0.000078
0.20	0.2000	0.0000	0.000078
0.50	0.5000	0.0000	0.000079
1.00	1.0000	0.0000	0.000079
2.00	2.0000	0.0000	0.000080
5.00	5.0000	0.0000	0.000081
10.00	10.0000	0.0000	0.000084
20.00	20.0000	0.0000	0.000089
50.00	50.0000	0.0000	0.00011
100.00	100.0000	0.0000	0.00019
200.00	199.9999	0.0001	0.00032

### 5. OFF CENTER LOADING ERROR



POINT	READING (g)
1	99.9999
2	99.9999
3	100.0000
4	99.9999
5	99.9998
OFF-CENTER LOADING	0.0001

NOTE: THIS CALIBRATION WAS CARRIED OUT AT THE CUSTOMER'S PLACE AT PRODUCTION AREA

THE REPORTED UNCERTAINTY OF MEASUREMENT WAS BASED ON A STANDARD UNCERTAINTY MULTIPLIED BY A COVERAGE FACTOR  $k=2$ , PROVIDING A LEVEL OF CONFIDENCE APPROXIMATELY 95%.

END OF CALIBRATION REPORT





# QUALITY CALIBRATION CO.,LTD.

235 Petchkasem 63/2 Road, Laksong, Bangkae, Bangkok 10160

Tel (662) 421-5402, (662) 444-0152-3, Fax (662) 809-4584

[www.qcalibration.com](http://www.qcalibration.com)

CERTIFICATE No : 22T0570

REFERENCE No : 63773-2

PAGE : 1 OF 2

## Certificate of Calibration

**EQUIPMENT** : COD REACTOR

**MANUFACTURER** : HACH

**MODEL** : DRB 200

**SERIAL No** : 15110C0498

**ID No** : DRB 06/59

**SUBMITTED BY** : S.P.S. CONSULTING SERVICE CO., LTD.  
7 SOI PHAHOLYOTHIN 24, PHAHOLYOTHIN RD.,  
JOMPOL, CHATUCHAK, BANGKOK 10900

**CALIBRATED BY** : CHAICHARN CH.

**CALIBRATION DATE** : 21-Jan-22

**APPROVED BY** : 

**ISSUED DATE** : 21-Jan-22

**RECEIVED DATE** : 19-Jan-22





# QUALITY CALIBRATION CO.,LTD.

235 Petchkasem 63/2 Road, Laksong, Bangkoe, Bangkok 10160

Tel (662) 421-5402, (662) 444-0152-3, Fax (662) 809-4584

CERTIFICATE No : 22T0570

PAGE : 2 OF 2

## Calibration Report

EQUIPMENT : COD REACTOR  
MANUFACTURER : HACH  
ID NUMBER : DRB 06/59  
RECEIVED DATE : 19-Jan-22  
AMBIENT TEMPERATURE : 23° C ± 1° C  
MODEL : DRB 200  
SERIAL NUMBER : 15110C0498  
CALIBRATION DATE : 21-Jan-22  
RELATIVE HUMIDITY : 52 %RH ± 10 % RH

### CONDITION OF THIS RESULTS OF CALIBRATION

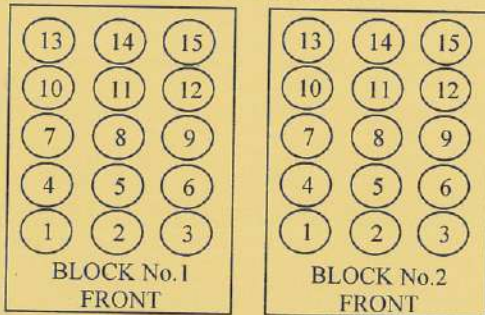
1. THIS INSTRUMENT WAS CALIBRATED BY DIRECT MEASUREMENT TEMPERATURE RECORDER WITH THERMOCOUPLE TYPE K UNDER NO LOAD CONDITION. THE THERMOCOUPLES WERE PLACED ON 15 POINTS AND LOCATED ONE THERMOCOUPLE IN EACH OF THE FOUR CORNERS OF THE REACTOR AND PLACED THE EIGHTH THERMOCOUPLE AT THE CENTER OF THE REACTOR.

### 2. REFERENCE STANDARD INSTRUMENTS :-

INSTRUMENT	MODEL	SERIAL No	CERTIFICATE No	DUE DATE
1) DATA LOGGER WITH TC TYPE K	HYDRA 2635A	8009008	21T6767	10-Jul-22

3. THIS RESULT WAS FOUND ACCURATE AS SHOWN ON DATE AND PLACE OF CALIBRATION ONLY.  
4. THIS RESULT EXCLUDE LONG TERM STABILITY OF THE UNIT UNDER CALIBRATION.  
5. THIS CERTIFICATE IS TRACEABLE TO THE INTERNATIONAL SYSTEM OF UNIT MAINTAINED AT:-  
- NATIONAL INSTITUTE OF METROLOGY (THAILAND) THROUGH QUALITY CALIBRATION CO.,LTD.

### RESULT OF CALIBRATION :- WITHOUT ADJUSTMENT



### TEMPERATURE MEASUREMENT ACCURACY TEST

Block No.	1	2
Controller temperature (°C)	145	145
Indicating Temperature	145	145
Measured Temperature (°C) at Spread Locations	1	150.5
	2	150.6
	3	149.7
	4	150.2
	5	149.9
	6	150.1
	7	150.1
	8	149.7
	9	150.6
	10	149.6
	11	149.9
	12	149.6
	13	149.7
	14	149.8
	15	149.6
Uncertainty of Measurement(± °C)	0.86	0.86

NOTE 1 : THE UNCERTAINTY OF MEASUREMENT EXCLUDED TEMPERATURE UNIFORMITY OF THE CHAMBER.

NOTE 2 : THIS CALIBRATION WAS CARRIED OUT AT THE CUSTOMER'S PLACE AT LABORATORY AREA.

THE REPORTED UNCERTAINTY OF MEASUREMENT WAS BASED ON A STANDARD UNCERTAINTY MULTIPLIED BY A COVERAGE FACTOR k =2, PROVIDING A LEVEL OF CONFIDENCE APPROXIMATELY 95%.

END OF CALIBRATION REPORT

F-G010 RE





**TECHNOLOGY PROMOTION ASSOCIATION (THAILAND-JAPAN)**  
**CORPORATE SERVICES 3 : EQUIPMENT CALIBRATION AND TESTING SERVICES**

534/4 PATTANAKARN ROAD SOI 18, SUANLUANG, SUANLUANG BANGKOK 10250

TEL. 0-2717-3000 FAX. 0-2719-9484

**Cert.No.:** 22TW98

**Page.:** 1 of 2

## Certificate of Testing

<b>Equipment :</b>	DO Meter
<b>Manufacturer :</b>	YSI
<b>Model :</b>	5000-230V
<b>Serial No. :</b>	15B100751
<b>ID No. :</b>	-
<b>Received Date :</b>	20 April 2022
<b>Test Date :</b>	21 April 2022
<b>Reference :</b>	2204-0429WC-1
<b>Submitted by :</b>	S.P.S. Consulting Service Co.,Ltd. 7 Phaholyothin 24, Phaholyothin Road., Jompol, Chatuchak, Bangkok 10900
<b>Laboratory Condition :</b>	Temperature ( $25 \pm 5$ ) °C Humidity ( $50 \pm 20$ ) %
<b>Test Procedure :</b>	In - house method : CP-CH9 by Comparison Technique with Azide Modification Method
<b>Tested by :</b>	Walalak Sirithean
<b>Approved by :</b>	<div style="text-align: center;"> Approved Signatory</div>
<div style="margin-left: 20px;"><input checked="" type="checkbox"/> Malee Butkruea <input type="checkbox"/> Saithip Meangmai <input type="checkbox"/> Warakorn Lerngagtrakul</div>	
<b>Issue Date :</b>	25 April 2022



Cert.No.: 22TW98

Page.: 2 of 2

**Condition of this result of calibration**

1. Reference Standard Instruments :

This certification is traceable to the International System of Unit through the reference standards laboratory of Industrial Calibration Center, Technology Promotion Association (Thailand-Japan).

<u>Instruments</u>	<u>Serial No.</u>	<u>ID No.</u>	<u>Certificate No.</u>	<u>Due Date</u>
1) Burette	-	130BU10	21CG1389	25 Mar 2023
2) Balance	1126143764	140RC004	21MM430	21 Sep 2022

2. Standard Material :-

<u>Material</u>	<u>Manufacturer</u>	<u>Lot.No.</u>	<u>Assay</u>
Sodium Thiosulfate pentahydrate	Merck	AM1763316	100.2%

**Result :** Dissolved Oxygen Meter Adjustment With Air 100 %

Dissolved Oxygen Probe No.: 14J100195

<b>Titration Method (Azide Modification Method)</b> (mg/L)	<b>DO Meter Reading</b> (mg/L)	<b>Standard Deviation</b> (mg/L)
8.12	8.14	0.0084

This report was certified only for the instrument we tested. It is allowable to use for study the system efficiency, The environmental impact control and present to organization it may concerned. Intend to use for advertising and referral purpose is prohibited. This report may not be reproduced other in full, without written approval of the laboratory

-o0o-



ระดับเสียงทั่วไป

THAILAND INSTITUTE OF SCIENTIFIC AND TECHNOLOGICAL RESEARCH (TISTR)

Request No. 21-65/0455

MTC No. EEL. BP. 41/0465

## CALIBRATION CERTIFICATE

**Submitted by** : S.P.S. Consulting Service Co.,Ltd.  
**Address** : 7 Soi Phaholyothin 24, Phaholyothin Road, Jompol, Chatuchak, Bangkok 10900.  
**Calibrated at** : Electrical and Electronic Standards Laboratory, Industrial Metrology and Testing Service Centre.  
: Soi 1C, Bangpoo Industrial Estate, Sukhumvit Rd., Muang, Samutprakan 10280.

### Instrument Calibrated :

**Description** : Sound Calibrator  
**Manufacturer** : ACO  
**Model** : 2127  
**Serial No.** : 130006

### Ambient Environment

**Temperature** :  $(23 \pm 3) ^\circ\text{C}$   
**Relative Humidity** :  $(50 \pm 15) \%$   
**Ambient Pressure** :  $(101.325 \pm 1.500) \text{ kPa}$

**Standards used** : 1. Digital Function Synthesizer NF Electronic DF-193A S/N 122037.

2. Measuring Amplifier Bruel&Kjaer 2636 S/N 1537484.
3. Programmable Attenuator Tamagawa TPA-303A S/N OF 2214.
4. Digital Multimeter Agilent 34401A S/N MY44005560.
5. Pressure Transmitter Vaisala PTB202AD S/N T0650001.
6. Audio Analyzer Keithley 2015-P S/N 4106495.
7. Condenser Microphone Bruel&Kjaer 4180 S/N 2889871.

**Calibration Procedure:** CP-102-04 based on IEC 60942-2003. The sound pressure level of instrument was measured by standard microphone using an insert voltage technique.

This instrument has been calibrated against standards maintained at Electrical and Electronic Standards Laboratory (EEL), which are traceable to the International System of Units through the National Institute of Metrology (Thailand).

The information on actual reading is attached herewith and the uncertainty limits quoted refer to the measured values only.

**Date of Receipt** : 22 Apr. 2022

**Date of Calibration** : 28 Apr. 2022

The results relate only to the items tested/calibrated or value assigned.

Advertising the Report/Certificate and publicity of the results except in full are prohibited unless written permission is obtained from the governor of TISTR.

FM.BL.MTC.002 Rev.4

**Head Office**  
35 Mu 3 Tambon Khlong Ha, Amphoe Khlong Luang,  
Changwat Pathumthani 12120, Thailand  
Tel. (66) 0 2577 9000  
Fax. (66) 0 2577 9009  
E-mail : rumpai@tistr.or.th Website:www.tistr.or.th

**Office/Laboratory**  
Soi 1C, Bangpoo Industrial Estate, Sukhumvit Road,  
Amphoe Muang, Changwat Samutprakan 10280, Thailand  
Tel. (66) 0 2323 1672-80 ext. 115, 116  
Fax. (66) 0 2323 9165  
E-mail : mtc@tistr.or.th

**Office**  
196 Phahonyothin Road, Chatuchak, Bangkok 10900,  
Thailand  
Tel. (66) 0 2579 1121-30 ext. 5219, 5225, 5217  
Fax. (66) 0 2579 8592  
E-mail : sumalee@tistr.or.th

THAILAND INSTITUTE OF SCIENTIFIC AND TECHNOLOGICAL RESEARCH (TISTR)

Request No. 21-65/0455

MTC No. EEL. BP. 41/0465

The reported expanded uncertainty is based upon a standard uncertainty multiplied by a coverage factor  $k = 2$ , providing a level of confidence of approximately 95%.

Nominal Output of Unit Under Test = 94 dB re 20 $\mu$ Pa at 1000 Hz

Acoustic Output in dB re 20 $\mu$ Pa, Corrected to Reference Conditions: 101.325 kPa, 23.0 °C and 50 %RH.

1. Sound Pressure Level

Standard Microphone Type	Measured Sound Pressure Level (dB)	Deviated value (dB)	Uncertainty (dB)	Tolerance limit IEC60942:2003 Class 1
1/2 inch Bruel&Kjaer 4180	93.93	-0.07	$\pm 0.10$	$\pm 0.40$ dB

2. Frequency

Standard Microphone Type	Measured Frequency (Hz)	Deviated value (Hz)	Uncertainty (Hz)	Tolerance limit IEC60942:2003 Class 1
1/2 inch Bruel&Kjaer 4180	999.9	-0.1	$\pm 1.5$	$\pm 1.0\%$

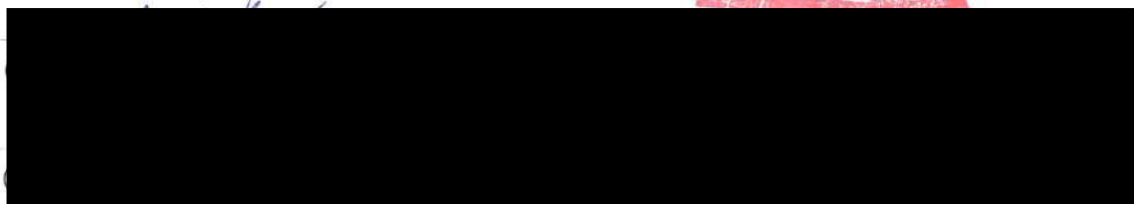
3. Total Distortion

Standard Microphone Type	Measured Total Distortion (%)	Uncertainty (%)	Tolerance limit IEC60942:2003 Class 1
1/2 inch Bruel&Kjaer 4180	1.44	$\pm 0.50$	$\pm 3.0\%$

- Note :
1. No adjustment.
  2. The calibrator pressure correction was not included.
  3. The microphone volume correction was not included.

Calibrated by :

Approved by :



Date of Calibration : 28 Apr. 2022

Industrial Metrology and Testing Service Centre

Date of Issue : 28 Apr. 2022

Ref : 2011265042601787001

2 / 2

End of Certificate

The results relate only to the items tested/calibrated or value assigned.

Advertising the Report/Certificate and publicity of the results except in full are prohibited unless written permission is obtained from the governor of TISTR.

FM.BLMTC.002 Rev.4

Head Office  
35 Mu 3 Tambon Khlong Ha, Amphoe Khlong Luang,  
Changwat Pathumthani 12120, Thailand  
Tel. (66) 0 2577 9000  
Fax. (66) 0 2577 9009  
E-mail : rumpai@tistr.or.th Website:www.tistr.or.th

Office/Laboratory  
Soi 1C, Bangpoo Industrial Estate, Sukhumvit Road,  
Amphoe Muang, Changwat Samutprakan 10280, Thailand  
Tel. (66) 0 2323 1672-80 ext. 115, 116  
Fax. (66) 0 2323 9165  
E-mail : mtc@tistr.or.th

Office  
196 Phahonyothin Road, Chatuchak, Bangkok 10900,  
Thailand  
Tel. (66) 0 2579 1121-30 ext. 5219, 5225, 5217  
Fax. (66) 0 2579 8592  
E-mail : sumalee@tistr.or.th





บริษัท เอส.พี.เอส. คอนซัลติ้ง เซอร์วิส จำกัด  
S.P.S. CONSULTING SERVICE CO., LTD.  
7 ซอยพหลโยธิน 24 ถนนพหลโยธิน แขวงจอมพล เขตจตุจักร กรุงเทพฯ 10900  
7 Soi Phaholyothin 24, Phaholyothin Rd., Jompol, Chatuchak, Bangkok 10900  
Tel : (662) 939-4370-72, Fax : (662) 513-4221, E-mail : sale@spscon.com, www.spscon.com

Noise R\_457/22

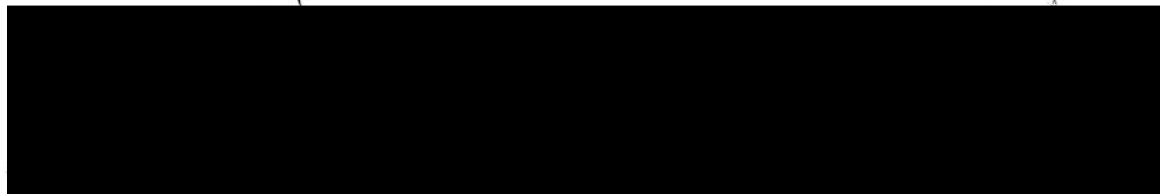
## Sound Level Meter Calibration Report

### Acoustic Calibrator Data

Brand	ACO	Number	AC 03/56
Model	2127	Serial No.	130006
Calibration Range	94 dB, 1000 Hz	Last Calibration	28 April 2022
		Due Date	28 April 2023

### Calibration Data

Sound Level Meter Data				Calibration Data		
SLM No.	Brand	Model	Serial No.	Date	Actual Reading [dB]	
					Before Adjustment	After Adjustment
ACO-R22	ACO	6236	00182010	04 September 2022	94.1	94.0
ACO-R29	ACO	6236	00192041	04 September 2022	94.0	94.0
ACO-R30	ACO	6236	00192042	04 September 2022	94.1	94.0
ACO-R31	ACO	6236	00192043	04 September 2022	94.0	94.0
Acoustic Certified Value : Thailand Institute of Scientific and Technological Research (TISTR)					93.93 ± 0.10 dB	





THAILAND INSTITUTE OF SCIENTIFIC AND TECHNOLOGICAL RESEARCH (TISTR)

Request No. 21-64/0841

MTC No. EEL. BP. 46/0964

## CALIBRATION CERTIFICATE

Submitted by : S.P.S CONSULTING SERVICE CO.,LTD.

Address : 7 Soi Phaholyothin 24, Phaholyothin Road, Jompol, Chatuchak, Bangkok 10900.

Calibrated at : Electrical and Electronic Standards Laboratory, Industrial Metrology and Testing Service Centre.  
: Soi 1C, Bangpoo Industrial Estate, Sukhumvit Rd., Muang, Samutprakan 10280.

### Instrument Calibrated :

Description : Acoustic Calibrator

Manufacturer : SVANTEK

Model : SV34

Serial No. : 33139

### Ambient Environment

Temperature :  $(23 \pm 3) ^\circ\text{C}$

Relative Humidity :  $(50 \pm 15) \%$

Ambient Pressure :  $(101.325 \pm 1.500) \text{ kPa}$

Standards used : 1. Digital Function Synthesizer NF Electronic DF-193A S/N 122037.  
2. Measuring Amplifier Bruel&Kjaer 2636 S/N 1537484.  
3. Programmable Attenuator Tamagawa TPA-303A S/N OF 2214.  
4. Digital Multimeter Agilent 34401A S/N MY44005560.  
5. Pressure Transmitter Vaisala PTB202AD S/N T0650001.  
6. Audio Analyzer Panasonic VP-7722A S/N 041477D122.  
7. Condenser Microphone B&K 4180 S/N 2889871.

Calibration Procedure: CP-102-04 based on IEC 60942-2003; The sound pressure level generated by sound calibrator under test shall be measured by standard microphone using an insert voltage technique.

This instrument has been calibrated against standards maintained at Electrical and Electronic Standards Laboratory (EEL), which are traceable to the International System of Units through the National Institute of Metrology (Thailand).

The information on actual reading is attached herewith and the uncertainty limits quoted refer to the measured values only.

Date of Receipt : 14 Sep. 2021

Date of Calibration : 17 Sep. 2021

The results relate only to the items tested or calibrated.

Advertising the Report/Certificate and publicity of the results except in full are prohibited unless written permission is obtained from the governor of TISTR.

FM.BL.MTC.002 Rev.3

#### Head Office

35 Mu 3 Tambon Khlong Ha, Amphoe Khlong Luang,  
Changwat Pathumthani 12120, Thailand  
Tel. (66) 0 2577 9000  
Fax. (66) 0 2577 9009  
E-mail : rumpai@tistr.or.th Website:www.tistr.or.th

#### Office/Laboratory

Soi 1C, Bangpoo Industrial Estate, Sukhumvit Road,  
Amphoe Muang, Changwat Samutprakan 10280, Thailand  
Tel. (66) 0 2323 1672-80 ext. 115, 116  
Fax. (66) 0 2323 9165  
E-mail : mtc@tistr.or.th

#### Office

196 Phahonyothin Road, Chatuchak, Bangkok 10900,  
Thailand  
Tel. (66) 0 2579 1121-30 ext. 5219, 5225, 5217  
Fax. (66) 0 2579 8592  
E-mail : sumalee@tistr.or.th

THAILAND INSTITUTE OF SCIENTIFIC AND TECHNOLOGICAL RESEARCH (TISTR)

Request No. 21-64/0841

MTC No. EEL. BP. 46/0964

The reported expanded uncertainty is based upon a standard uncertainty multiplied by a coverage factor  $k = 2$ , providing a level of confidence of approximately 95%.

Nominal Output of Unit Under Test = 114 dB re 20 $\mu$ Pa at 1000 Hz

Acoustic Output in dB re 20 $\mu$ Pa, Corrected to Reference Conditions: 101.325 kPa, 23.0 °C and 50 %RH.

1. Sound Pressure Level

Standard Microphone Type	Measured Sound Pressure Level (dB)	Deviated value (dB)	Uncertainty (dB)	Tolerance limit IEC60942:2003 Class 2
1/2 inch Bruel&Kjaer 4180	113.67	-0.33	$\pm 0.10$	$\pm 0.75$ dB

2. Frequency

Standard Microphone Type	Measured Frequency (Hz)	Deviated value (Hz)	Uncertainty (Hz)	Tolerance limit IEC60942:2003 Class 2
1/2 inch Bruel&Kjaer 4180	1000.0	0.0	$\pm 1.5$	$\pm 2.0\%$

3. Total Distortion

Standard Microphone Type	Measured Total Distortion (%)	Uncertainty (%)	Tolerance limit IEC60942:2003 Class 2
1/2 inch Bruel&Kjaer 4180	0.24	$\pm 0.50$	$\pm 4.0\%$

- Note :** 1. No adjustment.  
2. The calibrator pressure correction was not included.  
3. The microphone volume correction was not included.



Electrical and Electronic Standards Laboratory

Industrial Metrology and Testing Service Centre

Date of Calibration : 17 Sep. 2021

Date of Issue : 20 Sep. 2021

Ref : 2011264091403811002

End of Certificate

2 / 2

The results relate only to the items tested or calibrated.

Advertising the Report/Certificate and publicity of the results except in full are prohibited unless written permission is obtained from the governor of TISTR.

FM.BL.MTC.002 Rev.3

Head Office

35 Mu 3 Tambon Khlong Ha, Amphoe Khlong Luang,  
Changwat Pathumthani 12120, Thailand  
Tel. (66) 0 2577 9000  
Fax. (66) 0 2577 9009  
E-mail : rumpai@tistr.or.th Website:www.tistr.or.th

Office/Laboratory

Soi 1C, Bangpoo Industrial Estate, Sukhumvit Road,  
Amphoe Muang, Changwat Samutprakan 10280, Thailand  
Tel. (66) 0 2323 1672-80 ext. 115, 116  
Fax. (66) 0 2323 9165  
E-mail : mtc@tistr.or.th

Office

196 Phahonyothin Road, Chatuchak, Bangkok 10900,  
Thailand  
Tel. (66) 0 2579 1121-30 ext. 5219, 5225, 5217  
Fax. (66) 0 2579 8592  
E-mail : sumalee@tistr.or.th



Request No. 21-65/0760

MTC No. EEL. BP. 24/0965

## CALIBRATION CERTIFICATE

Submitted by : S.P.S. CONSULTING SERVICE CO., LTD.

Address : 7 Soi Phaholyothin 24, Phaholyothin Road, Jompol, Chatuchak, Bangkok 10900.

Calibrated at : Electrical and Electronic Standards Laboratory, Industrial Metrology and Testing Service Centre.  
: Soi 1C, Bangpoo Industrial Estate, Sukhumvit Rd., Muang, Samutprakan 10280.

**Instrument Calibrated :**

Description : Acoustic Calibrator

Manufacturer : SVANTEK

Model : SV34

Serial No. : 33139

**Ambient Environment**

Temperature :  $(23 \pm 3) ^\circ\text{C}$

Relative Humidity :  $(50 \pm 15) \%$

Ambient Pressure :  $(101.325 \pm 1.500) \text{ kPa}$

Standards used : 1. Digital Function Synthesizer NF Electronic DF-193A S/N 122037.

2. Measuring Amplifier Bruel&Kjaer 2636 S/N 1537484.

3. Programmable Attenuator Tamagawa TPA-303A S/N OF 2214.

4. Digital Multimeter Agilent 34401A S/N MY44005560.

5. Pressure Transmitter Vaisala PTB202AD S/N T0650001.

6. Audio Analyzer Panasonic VP-7722A S/N 041477D122.

7. Condenser Microphone Bruel&Kjaer 4180 S/N 2633526.

**Calibration Procedure:** CP-102-04 based on IEC 60942-2003. The sound pressure level of instrument was measured by standard microphone using an insert voltage technique.

This instrument has been calibrated against standards maintained at Electrical and Electronic Standards Laboratory (EEL), which are traceable to the International System of Units through the National Institute of Metrology (Thailand).

The information on actual reading is attached herewith and the uncertainty limits quoted refer to the measured values only.

Date of Receipt : 13 Sep. 2022

Date of Calibration : 19 Sep. 2022

1 / 2

The results relate only to the items tested/calibrated or value assigned.

Advertising the Report/Certificate and publicity of the results except in full are prohibited unless written permission is obtained from the governor of TISTR.

FM.BL.MTC.002 Rev.4

**Head Office**

35 Mu 3 Tambon Khlong Ha, Amphoe Khlong Luang,  
Changwat Pathumthani 12120, Thailand  
Tel. (66) 0 2577 9000  
Fax. (66) 0 2577 9009  
E-mail : rumpai@tistr.or.th Website:www.tistr.or.th

**Office/Laboratory**

Soi 1C, Bangpoo Industrial Estate, Sukhumvit Road,  
Amphoe Muang, Changwat Samutprakan 10280, Thailand  
Tel. (66) 0 2323 1672-80 ext. 115, 116  
Fax. (66) 0 2323 9165  
E-mail : mtc@tistr.or.th

**Office**

196 Phahonyothin Road, Chatuchak, Bangkok 10900,  
Thailand  
Tel. (66) 0 2579 1121-30 ext. 5219, 5225, 5217  
Fax. (66) 0 2579 8592  
E-mail : sumalee@tistr.or.th

Request No. 21-65/0760

MTC No. EEL. BP. 24/0965

The reported expanded uncertainty is based upon a standard uncertainty multiplied by a coverage factor  $k = 2$ , providing a level of confidence of approximately 95%.

Nominal Output of Unit Under Test = 114 dB re 20 $\mu$ Pa at 1000 Hz

Acoustic Output in dB re 20 $\mu$ Pa, Corrected to Reference Conditions: 101.325 kPa, 23.0 °C and 50 %RH.

1. Sound Pressure Level

Standard Microphone Type	Measured Sound Pressure Level (dB)	Deviated value (dB)	Uncertainty (dB)	Tolerance limit IEC60942:2003 Class 2
1/2 inch Bruel&Kjaer 4180	113.63	-0.37	$\pm 0.10$	$\pm 0.75$ dB

2. Frequency

Standard Microphone Type	Measured Frequency (Hz)	Deviated value (Hz)	Uncertainty (Hz)	Tolerance limit IEC60942:2003 Class 2
1/2 inch Bruel&Kjaer 4180	1000.0	0.0	$\pm 1.5$	$\pm 2.0$ %

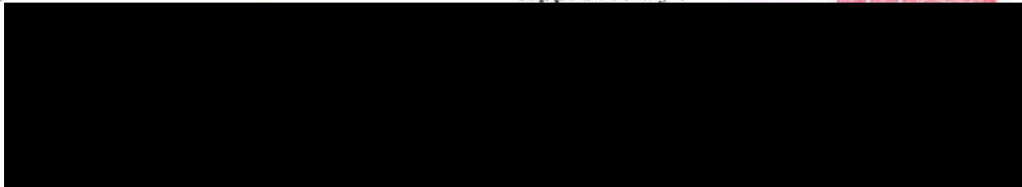
3. Total Distortion

Standard Microphone Type	Measured Total Distortion (%)	Uncertainty (%)	Tolerance limit IEC60942:2003 Class 2
1/2 inch Bruel&Kjaer 4180	0.24	$\pm 0.50$	$\pm 4.0$ %

- Note :
1. No adjustment.
  2. The calibrator pressure correction was not included.
  3. The microphone volume correction was not included.

Calibrated by :

Approved by :



Electrical and Electronic Standards Laboratory

Industrial Metrology and Testing Service Centre

Date of Calibration : 19 Sep. 2022

Date of Issue : 20 Sep. 2022

Ref : 2011265091304034002

2 / 2

End of Certificate

The results relate only to the items tested/calibrated or value assigned.

Advertising the Report/Certificate and publicity of the results except in full are prohibited unless written permission is obtained from the governor of TISTR.

FM.BL.MTC.002 Rev.4

Head Office

35 Mu 3 Tambon Khlong Ha, Amphoe Khlong Luang,  
Changwat Pathumthani 12120, Thailand  
Tel. (66) 0 2577 9000  
Fax. (66) 0 2577 9009  
E-mail : rumpai@tistr.or.th Website:www.tistr.or.th

Office/Laboratory

Soi 1C, Bangpoo Industrial Estate, Sukhumvit Road,  
Amphoe Muang, Changwat Samutprakan 10280, Thailand  
Tel. (66) 0 2323 1672-80 ext. 115, 116  
Fax. (66) 0 2323 9165  
E-mail : mtc@tistr.or.th

Office

196 Phahonyothin Road, Chatuchak, Bangkok 10900,  
Thailand  
Tel. (66) 0 2579 1121-30 ext. 5219, 5225, 5217  
Fax. (66) 0 2579 8592  
E-mail : sumalee@tistr.or.th



บริษัท เอส.พี.เอส. คอนซัลติ้ง เซอร์วิส จำกัด  
S.P.S. CONSULTING SERVICE CO., LTD.  
7 ซอยพหลโยธิน 24 ถนนพหลโยธิน แขวงจอมพล เขตจตุจักร กรุงเทพฯ 10900  
7 Soi Phaholyothin 24, Phaholyothin Rd., Jompol, Chatuchak, Bangkok 10900  
Tel : (662) 939-4370-72, Fax : (662) 513-4221, E-mail : sale@spscon.com, www.spscon.com

Noise Dose R\_684/22

### Noise Dose Meter Calibration Report

#### Acoustic Calibrator Data

Brand	SVANTEK	Number	SV 06/62
Model	SV34	Serial No.	33139
Calibration Range	114 dB, 1000 Hz	Last Calibration	19 September 2022
		Due Date	19 September 2023

#### Calibration Data

Sound Level Meter Data				Calibration Data		
SLM No.	Brand	Model	Serial No.	Date	Actual Reading [dB]	
					Before Adjustment	After Adjustment
ACO-R06	ACO	6236	00152005	05 December 2022	113.5	113.6
ACO-R13	ACO	6236	00172041	05 December 2022	113.6	113.6
Acoustic Certified Value : Thailand Institute of Scientific and Technological Research (TISTR)					113.63 ± 0.10 dB	





บริษัท เอส.พี.เอส. คอนซัลติ้ง เซอร์วิส จำกัด  
S.P.S. CONSULTING SERVICE CO., LTD.  
7 ซอยพหลโยธิน 24 ถนนพหลโยธิน แขวงจอมพล เขตจตุจักร กรุงเทพฯ 10900  
7 Soi Phaholyothin 24, Phaholyothin Rd., Jompol, Chatuchak, Bangkok 10900  
Tel : (662) 939-4370-72 Fax : (662) 513-4221 E-mail : sale@spscon.com, www.spscon.com

Noise Dose R\_473/22

### Noise Dose Meter Calibration Report

Acoustic Calibrator Data						
Brand	SVANTEK			Number	SV 06/62	
Model	SV34			Serial No.	33139	
Calibration Range	114 dB, 1000 Hz			Last Calibration	17 September 2021	
				Due Date	17 September 2022	
Calibration Data						
Sound Level Meter Data				Calibration Data		
SLM No.	Brand	Model	Serial No.	Date	Actual Reading [dB]	
					Before Adjustment	After Adjustment
NMD-B01	SVANTEK	SV-104IS	80840	18 September 2022	113.5	113.6
NMD-B02	SVANTEK	SV-104IS	80842	18 September 2022	113.6	113.6
NMD-B03	SVANTEK	SV-104IS	80852	18 September 2022	113.6	113.6
NMD-B04	SVANTEK	SV-104IS	80854	18 September 2022	113.5	113.6
NMD-B05	SVANTEK	SV-104IS	80856	18 September 2022	113.6	113.6
NMD-B06	SVANTEK	SV-104IS	80816	18 September 2022	113.6	113.6
NMD-B07	SVANTEK	SV-104IS	80817	18 September 2022	113.5	113.6
NMD-B08	SVANTEK	SV-104IS	80818	18 September 2022	113.6	113.6
NMD-B09	SVANTEK	SV-104IS	80829	18 September 2022	113.6	113.6
NMD-R02	SVANTEK	SV-104IS	60152	18 September 2022	113.6	113.6
NMD-R03	SVANTEK	SV-104IS	60153	18 September 2022	113.6	113.6
NMD-R05	SVANTEK	SV-104IS	60155	18 September 2022	113.5	113.6
NMD-R06	SVANTEK	SV-104IS	60146	18 September 2022	113.6	113.6
NMD-R13	SVANTEK	SV-104IS	63438	18 September 2022	113.6	113.6
NMD-R20	SVANTEK	SV-104IS	70035	18 September 2022	113.6	113.6
NMD-R22	SVANTEK	SV-104IS	80801	18 September 2022	113.5	113.6
NMD-R26	SVANTEK	SV-104IS	80836	18 September 2022	113.6	113.6
NMD-R27	SVANTEK	SV-104IS	80837	18 September 2022	113.5	113.6
NMD-R35	SVANTEK	SV-104IS	80873	18 September 2022	113.6	113.6
Acoustic Certified Value : Thailand Institute of Scientific and Technological Research (TISTR)					113.67 ± 0.10 dB	



บริษัท เอส.พี.เอส. คอนซัลติ้ง เซอร์วิส จำกัด  
S.P.S. CONSULTING SERVICE CO., LTD.  
7 ซอยพหลโยธิน 24 ถนนพหลโยธิน แขวงจตุจักร เขตจตุจักร กรุงเทพฯ 10900  
7 Soi Phaholyothin 24, Phaholyothin Rd., Jompol, Chatechak, Bangkok 10900  
Tel : (662) 939-4370-72, Fax : (662) 513-4221, E-mail : sale@spscon.com, www.spscon.com

Noise Dose R\_586/22

### Noise Dose Meter Calibration Report

Acoustic Calibrator Data						
Brand	SVANTEK			Number	SV 06/62	
Model	SV34			Serial No.	33139	
Calibration Range	114 dB, 1000 Hz			Last Calibration	19 September 2022	
				Due Date	19 September 2023	
Calibration Data						
Sound Level Meter Data				Calibration Data		
SLM No.	Brand	Model	Serial No.	Date	Actual Reading [dB]	
					Before Adjustment	After Adjustment
NMD-B01	SVANTEK	SV-104IS	80840	13 November 2022	113.6	113.6
NMD-B02	SVANTEK	SV-104IS	80842	13 November 2022	113.5	113.6
NMD-B03	SVANTEK	SV-104IS	80852	13 November 2022	113.6	113.6
NMD-B04	SVANTEK	SV-104IS	80854	13 November 2022	113.6	113.6
NMD-B05	SVANTEK	SV-104IS	80856	13 November 2022	113.5	113.6
NMD-B06	SVANTEK	SV-104IS	80816	13 November 2022	113.6	113.6
NMD-R02	SVANTEK	SV-104IS	60152	13 November 2022	113.6	113.6
NMD-R03	SVANTEK	SV-104IS	60153	13 November 2022	113.5	113.6
NMD-R05	SVANTEK	SV-104IS	60155	13 November 2022	113.6	113.6
NMD-R06	SVANTEK	SV-104IS	60146	13 November 2022	113.6	113.6
NMD-R13	SVANTEK	SV-104IS	63438	13 November 2022	113.6	113.6
NMD-R20	SVANTEK	SV-104IS	70035	13 November 2022	113.6	113.6
NMD-R22	SVANTEK	SV-104IS	80801	13 November 2022	113.5	113.6
NMD-R26	SVANTEK	SV-104IS	80836	13 November 2022	113.6	113.6
NMD-R27	SVANTEK	SV-104IS	80837	13 November 2022	113.6	113.6
NMD-R35	SVANTEK	SV-104IS	80873	13 November 2022	113.6	113.6
Acoustic Certified Value : Thailand Institute of Scientific and Technological Research (TISTR)					113.63± 0.10 dB	



บริษัท เอส.พี.เอส. คอนซัลติ้ง เซอร์วิส จำกัด  
S.P.S. CONSULTING SERVICE CO., LTD.  
7 ซอยพหลโยธิน 24 ถนนพหลโยธิน แขวงจอมหอย เขตจตุจักร กรุงเทพฯ 10900  
7 Soi Phaholyothin 24, Phaholyothin Rd., Jompol, Chatechak, Bangkok 10900  
Tel : (662) 939-4370-72, Fax : (662) 513-4221, E-mail : sale@spscon.com, www.spscon.com

Noise Dose R\_666/22

## Noise Dose Meter Calibration Report

### Acoustic Calibrator Data

Brand	SVANTEK	Number	SV 06/62
Model	SV34	Serial No.	33139
Calibration Range	114 dB, 1000 Hz	Last Calibration	19 September 2022
		Due Date	19 September 2023

### Calibration Data

Sound Level Meter Data				Calibration Data		
SLM No.	Brand	Model	Serial No.	Date	Actual Reading [dB]	
					Before Adjustment	After Adjustment
NMD-B01	SVANTEK	SV-104IS	80840	28 November 2022	113.5	113.6
NMD-B02	SVANTEK	SV-104IS	80842	28 November 2022	113.6	113.6
NMD-B03	SVANTEK	SV-104IS	80852	28 November 2022	113.6	113.6
NMD-B04	SVANTEK	SV-104IS	80854	28 November 2022	113.6	113.6
NMD-B05	SVANTEK	SV-104IS	80856	28 November 2022	113.5	113.6
NMD-B06	SVANTEK	SV-104IS	80816	28 November 2022	113.6	113.6
NMD-R02	SVANTEK	SV-104IS	60152	28 November 2022	113.6	113.6
NMD-R03	SVANTEK	SV-104IS	60153	28 November 2022	113.5	113.6
NMD-R05	SVANTEK	SV-104IS	60155	28 November 2022	113.6	113.6
NMD-R06	SVANTEK	SV-104IS	60148	28 November 2022	113.6	113.6
NMD-R13	SVANTEK	SV-104IS	63438	28 November 2022	113.6	113.6
NMD-R20	SVANTEK	SV-104IS	70035	28 November 2022	113.5	113.6
NMD-R22	SVANTEK	SV-104IS	80801	28 November 2022	113.6	113.6
NMD-R26	SVANTEK	SV-104IS	80836	28 November 2022	113.6	113.6
NMD-R27	SVANTEK	SV-104IS	80837	28 November 2022	113.5	113.6
NMD-R35	SVANTEK	SV-104IS	80873	28 November 2022	113.6	113.6
Acoustic Certified Value : Thailand Institute of Scientific and Technological Research (TISTR)					113.63 ± 0.10 dB	



คุณภาพอากาศในสถานประกอบการ



บริษัท เอส.พี.เอส. คอนซัลติ้ง เซอร์วิส จำกัด  
S.P.S. CONSULTING SERVICE CO., LTD.  
7 ซอยพหลโยธิน 24 ถนนพหลโยธิน แขวงจอมพล เขตจตุจักร กรุงเทพฯ 10900  
7 Soi Phaholyothin 24, Phaholyothin Rd., Jompol, Chaluchak, Bangkok 10900  
Tel : (662) 939-4370-72, Fax : (662) 513-4221, E-mail : sale@spscon.com, www.spscon.com

Personal Pump Calibration Report

Calibration Method : Dry Cal Primary Flowmeter

Model : Defender 510-H

S/N : 136164

Environmental Conditions

Temperature : 25  $\pm$  3  $^{\circ}$ C  
Pressure : 1010  $\pm$  15 mmbar

Personal Pump Data				Calibration Data								
No.	Brand	Model	Serial No.	Date	Flow Rate (ml/min)						Value From Calibration Curve	
					Setting			Actual (Q std.)				
					1	2	3	1	2	3	y	R <sup>2</sup>
B01	SKC	224-PCXR4	262101	06/10/2022	1,000	1,500	2,000	994	1,497	1,998	1.001x - 3.789	1.000
B02	SKC	224-PCXR4	626166	03/10/2022	1,000	1,500	2,000	1,002	1,505	2,001	1.009x - 19.707	0.999
B03	SKC	224-PCXR4	612968	03/10/2022	1,000	1,500	2,000	996	1,494	2,001	1.006x - 12.308	1.000
B04	SKC	224-PCXR4	602804	03/10/2022	1,000	1,500	2,000	1,000	1,502	2,000	1.004x - 5.919	1.000
B05	SKC	224-PCXR4	612693	06/10/2022	1,000	1,500	2,000	1,003	1,499	2,003	1.012x - 22.622	0.999
B06	SKC	224-PCXR4	262188	06/10/2022	1,000	1,500	2,000	995	1,507	1,999	1.005x - 11.738	1.000
B07	SKC	224-PCXR4	626262	04/10/2022	1,000	1,500	2,000	998	1,492	1,995	0.993x + 6.405	1.000
B08	SKC	224-PCXR4	626100	04/10/2022	1,000	1,500	2,000	1,002	1,499	2,003	1.013x - 24.18	0.999
B09	SKC	224-PCXR4	626479	06/10/2022	1,000	1,500	2,000	996	1,490	1,994	0.994x + 1.675	1.000
B10	SKC	224-PCXR4	091950	03/10/2022	1,000	1,500	2,000	993	1,503	2,001	1.017x - 34.588	0.999
B11	SKC	224-PCXR8	564315	06/10/2022	1,000	1,500	2,000	994	1,490	2,003	1.007x - 14.438	1.000
B12	SKC	224-PCXR4	034656	03/10/2022	1,000	1,500	2,000	1,003	1,503	2,003	1.010x - 19.005	0.999
B13	SKC	224-PCXR4	602073	03/10/2022	1,000	1,500	2,000	995	1,500	1,993	0.997x + 2.708	1.000
B14	SKC	224-PCXR4	626313	03/10/2022	1,000	1,500	2,000	998	1,491	1,988	0.992x + 6.007	1.000
B15	SKC	224-PCXR4	626474	03/10/2022	1,000	1,500	2,000	1,003	1,502	2,005	1.003x - 10.123	0.999
B16	SKC	224-PCXR4	626477	03/10/2022	1,000	1,500	2,000	993	1,504	2,001	1.015x - 31.624	0.999
B17	SKC	224-PCXR4	626860	03/10/2022	1,000	1,500	2,000	997	1,494	1,991	0.997x - 0.239	1.000
B18	SKC	224-PCXR4	691484	03/10/2022	1,000	1,500	2,000	1,003	1,500	2,001	1.008x - 16.073	0.999
B19	SKC	224-PCXR4	691599	03/10/2022	1,000	1,500	2,000	993	1,503	2,000	1.005x - 8.623	1.000
B20	SKC	224-PCXR4	691587	03/10/2022	1,000	1,500	2,000	991	1,504	1,999	1.016x - 33.631	0.999
B21	SKC	224-PCXR4	691531	06/10/2022	1,000	1,500	2,000	993	1,500	1,994	1.001x - 6.669	1.000
B22	SKC	224-PCXR4	691654	04/10/2022	1,000	1,500	2,000	1,003	1,501	2,003	1.011x - 20.429	0.999
B23	SKC	224-PCXR4	798393	04/10/2022	1,000	1,500	2,000	993	1,505	2,002	1.018x - 34.843	0.999
B24	SKC	224-PCXR4	626363	06/10/2022	1,000	1,500	2,000	999	1,502	2,000	1.012x - 23.225	0.999
B25	SKC	224-PCXR4	798489	06/10/2022	1,000	1,500	2,000	1,001	1,512	2,001	0.998x + 5.049	1.000
B26	SKC	224-PCXR4	798479	06/10/2022	1,000	1,500	2,000	999	1,499	1,993	0.996x + 2.892	1.000
B27	SKC	224-PCXR4	691673	06/10/2022	1,000	1,500	2,000	994	1,503	1,999	1.011x - 22.778	0.999
B28	SKC	224-PCXR4	691570	04/10/2022	1,000	1,500	2,000	1,001	1,500	2,002	1.007x - 13.301	1.000
B29	SKC	224-PCXR4	626472	06/10/2022	1,000	1,500	2,000	1,000	1,496	1,998	1.002x - 5.261	1.000
B30	SKC	224-PCXR4	691489	03/10/2022	1,000	1,500	2,000	1,007	1,500	2,004	1.010x - 18.482	0.999
B31	SKC	224-PCXR4	691509	03/10/2022	1,000	1,500	2,000	993	1,497	1,998	1.004x - 8.882	1.000
B32	SKC	224-PCXR4	091567	03/10/2022	1,000	1,500	2,000	992	1,504	2,001	1.007x - 15.930	1.000
B33	SKC	224-PCXR4	091756	06/10/2022	1,000	1,500	2,000	994	1,496	1,991	0.996x + 0.714	1.000
B34	SKC	224-PCXR4	612962	03/10/2022	1,000	1,500	2,000	1,002	1,501	2,001	1.009x - 17.944	0.999
B35	SKC	224-PCXR4	602682	03/10/2022	1,000	1,500	2,000	993	1,498	1,995	1.001x - 7.331	1.000
B36	SKC	224-PCXR4	626164	06/10/2022	1,000	1,500	2,000	999	1,495	1,999	1.000x - 4.866	1.000
B37	SKC	224-PCXR4	626256	06/10/2022	1,000	1,500	2,000	994	1,506	1,999	1.013x - 28.214	0.999
B38	SKC	224-PCXR4	626167	06/10/2022	1,000	1,500	2,000	997	1,496	1,995	1.002x - 6.342	1.000
B39	SKC	224-PCXR4	034637	06/10/2022	1,000	1,500	2,000	1,006	1,500	2,001	1.008x - 16.624	0.999
B40	SKC	224-PCXR4	798349	05/10/2022	1,000	1,500	2,000	994	1,505	1,998	1.014x - 29.642	0.999





บริษัท เอส.พี.เอส. คอนซัลติ้ง เซอร์วิส จำกัด  
S.P.S. CONSULTING SERVICE CO., LTD.  
7 ซอยพหลโยธิน 24 ถนนพหลโยธิน แขวงจอมพล เขตจตุจักร กรุงเทพฯ 10900  
7 Soi Phaholyothin 24, Phaholyothin Rd., Jompol, Chatuchak, Bangkok 10900  
Tel : (662) 939-4370-72 Fax : (662) 513-4221 E-mail : sale@spscon.com, www.spscon.com

### Personal Pump Calibration Report

Calibration Method : Dry Cal Primary Flowmeter

Model : Defender 510-H

S/N : 136164

#### Environmental Conditions

Temperature : 25  $\pm$  3  $^{\circ}$ C  
Pressure : 1010  $\pm$  15 mmbar

Personal Pump Data				Calibration Data								
No.	Brand	Model	Serial No.	Date	Flow Rate (ml/min)						Value From Calibration Curve	
					Setting			Actual (Q std.)				
					1	2	3	1	2	3	y	R <sup>2</sup>
B41	SKC	224-PCXR4	612669	05/10/2022	1,000	1,500	2,000	998	1,496	1,990	0.994x + 3.271	1.000
B42	SKC	224-PCXR4	626041	06/10/2022	1,000	1,500	2,000	1,005	1,498	1,994	0.988x + 15.619	1.000
B43	SKC	224-PCXR4	034636	06/10/2022	1,000	1,500	2,000	999	1,501	1,992	0.991x + 10.565	1.000
B44	SKC	224-PCXR8	529341	06/10/2022	1,000	1,500	2,000	1,002	1,502	2,002	1.011x - 21.418	0.999
B45	SKC	224-PCXR8	529594	06/10/2022	1,000	1,500	2,000	998	1,498	1,989	0.993x + 5.959	1.000
B46	SKC	224-PCXR8	566743	06/10/2022	1,000	1,500	2,000	994	1,504	2,002	1.016x - 32.885	0.999
B47	SKC	224-PCXR8	566747	06/10/2022	1,000	1,500	2,000	1,002	1,500	2,004	1.013x - 24.960	0.999
B48	SKC	224-PCXR8	566753	03/10/2022	1,000	1,500	2,000	999	1,494	1,998	0.999x - 2.114	1.000
B49	SKC	224-PCXR8	566780	05/10/2022	1,000	1,500	2,000	1,003	1,502	2,003	1.012x - 22.706	0.999
B50	SKC	224-PCXR8	500400	06/10/2022	1,000	1,500	2,000	1,001	1,495	2,002	1.001x - 3.737	1.000
B51	SKC	224-PCXR8	500363	06/10/2022	1,000	1,500	2,000	995	1,504	1,999	1.011x - 25.590	0.999
B52	SKC	224-PCXR8	093186	03/10/2022	1,000	1,500	2,000	995	1,496	1,994	0.997x - 1.161	1.000
B53	SKC	224-PCXR8	707670	03/10/2022	1,000	1,500	2,000	1,002	1,500	2,002	1.010x - 20.668	0.999
B54	SKC	224-PCXR3	509821	03/10/2022	1,000	1,500	2,000	993	1,500	2,001	1.017x - 34.516	0.999
B55	SKC	224-PCXR3	510710	03/10/2022	1,000	1,500	2,000	999	1,494	1,994	0.995x + 2.521	1.000
B56	SKC	224-PCXR3	511450	03/10/2022	1,000	1,500	2,000	1,002	1,500	2,001	1.004x - 7.562	1.000
B57	SKC	224-PCXR3	510798	06/10/2022	1,000	1,500	2,000	997	1,492	1,998	0.996x + 1.109	1.000
B58	SKC	224-PCXR3	509852	06/10/2022	1,000	1,500	2,000	1,000	1,498	1,999	1.007x - 19.113	0.999
B59	SKC	224-PCXR3	509862	03/10/2022	1,000	1,500	2,000	996	1,503	1,994	0.997x + 2.955	1.000
B60	SKC	224-PCXR3	512655	03/10/2022	1,000	1,500	2,000	1,005	1,500	2,003	1.010x - 19.862	0.999
B61	SKC	224-PCXR3	503915	04/10/2022	1,000	1,500	2,000	994	1,489	1,998	1.004x - 11.786	1.000
B62	SKC	224-PCXR3	505975	03/10/2022	1,000	1,500	2,000	999	1,494	1,996	0.997x - 0.064	1.000
B63	SKC	224-PCXR3	511432	03/10/2022	1,000	1,500	2,000	991	1,501	1,999	1.017x - 35.461	0.999
B64	SKC	224-PCXR3	508302	03/10/2022	1,000	1,500	2,000	997	1,492	1,989	0.992x + 6.266	1.000
B65	SKC	224-PCXR3	508310	06/10/2022	1,000	1,500	2,000	1,002	1,500	2,003	1.011x - 21.992	0.999
B66	SKC	224-PCXR3	509861	06/10/2022	1,000	1,500	2,000	1,002	1,491	1,991	0.988x + 13.904	1.000
B67	SKC	224-PCXR3	506295	06/10/2022	1,000	1,500	2,000	993	1,508	2,004	1.017x - 32.785	0.999
B68	SKC	224-PCXR3	505872	05/10/2022	1,000	1,500	2,000	1,002	1,491	1,997	0.994x + 5.237	1.000
B69	SKC	224-PCXR3	508375	05/10/2022	1,000	1,500	2,000	1,001	1,499	2,000	1.010x - 21.330	0.999
B70	SKC	224-PCXR3	510623	05/10/2022	1,000	1,500	2,000	992	1,503	1,997	1.002x - 6.054	1.000
B71	SKC	224-PCXR3	508367	05/10/2022	1,000	1,500	2,000	990	1,506	2,002	1.018x - 37.025	0.999
B72	SKC	224-PCXR3	505977	05/10/2022	1,000	1,500	2,000	1,001	1,498	1,993	0.993x + 5.731	1.000
B73	SKC	224-PCXR3	512606	05/10/2022	1,000	1,500	2,000	1,001	1,501	2,005	1.014x - 24.397	0.999
B74	SKC	224-PCXR3	505993	05/10/2022	1,000	1,500	2,000	996	1,495	1,994	0.999x - 4.284	1.000
B75	SKC	224-PCXR3	509820	05/10/2022	1,000	1,500	2,000	996	1,498	1,990	0.995x + 2.987	1.000
B76	SKC	224-PCXR3	509811	03/10/2022	1,000	1,500	2,000	993	1,498	1,998	1.006x - 14.003	1.000
B77	SKC	224-PCXR3	508301	06/10/2022	1,000	1,500	2,000	1,000	1,501	2,003	1.014x - 25.845	0.999
B78	SKC	224-PCXR3	510677	06/10/2022	1,000	1,500	2,000	996	1,503	1,999	1.012x - 27.321	0.999
B79	SKC	224-PCXR3	510920	06/10/2022	1,000	1,500	2,000	994	1,493	1,994	0.999x - 3.905	1.000





บริษัท เอส.พี.เอส. คอนซัลติ้ง เซอร์วิส จำกัด  
S.P.S. CONSULTING SERVICE CO., LTD.  
7 ซอยพหลโยธิน 24 ถนนพหลโยธิน แขวงจอมพล เขตจตุจักร กรุงเทพฯ 10900  
7 Soi Phaholyothin 24, Phaholyothin Rd., Jompol, Chatuchak, Bangkok 10900  
Tel : (662) 939-4370-72, Fax : (662) 513-4221, E-mail : sale@spscon.com, www.spscon.com

Rotameter Calibration Report (For Personal Pump High Flow Adjust)

Calibration Method : Dry Cal Primary Flowmeter

Model : Defender 510-H

S/N : 136164

Calibration Data

Rotameter Data			Calibration Data								
No.	Brand	Model	Date	Flow Rate (ml/min)						Value From Calibration Curve	
				Flow Rate (Reading)			Actual (Q std.)				
				1	2	3	1	2	3	y	R <sup>2</sup>
H-B01	Dwyer	VFB-65	05/10/2022	500	1,000	2,000	505.3	990.7	1975.7	0.990x + 8.856	1.000
H-B02	Dwyer	VFB-65	04/10/2022	500	1,000	2,000	495.7	997.8	1995.3	0.994x + 4.025	1.000
H-B03	Dwyer	VFB-65	04/10/2022	500	1,000	2,000	498.3	987.5	2010.2	1.004x - 14.483	0.999
H-B04	Dwyer	VFB-65	05/10/2022	500	1,000	2,000	501.2	999.9	2008.7	0.998x - 0.511	1.000
H-B05	Dwyer	VFB-65	05/10/2022	500	1,000	2,000	499.0	997.4	1972.3	0.987x + 14.507	1.000
H-B06	Dwyer	VFB-65	05/10/2022	500	1,000	2,000	503.9	993.4	1981.4	1.006x - 9.415	0.999
H-B07	Dwyer	VFB-65	05/10/2022	500	1,000	2,000	504.1	989.0	2018.3	1.002x - 2.255	1.000
H-B08	Dwyer	VFB-65	04/10/2022	500	1,000	2,000	499.8	999.2	1975.8	0.997x + 2.922	0.999
H-B09	Dwyer	VFB-65	06/10/2022	500	1,000	2,000	503.7	1006.6	2014.3	0.993x + 14.424	1.000
H-B10	Dwyer	VFB-65	06/10/2022	500	1,000	2,000	496.9	998.6	2012.4	0.998x + 1.450	1.000





บริษัท เอส.พี.เอส. คอนซัลติ้ง เซอร์วิส จำกัด

S.P.S. CONSULTING SERVICE CO., LTD.

7 ซอยพหลโยธิน 24 ถนนพหลโยธิน แขวงจอมพล เขตจตุจักร กรุงเทพฯ 10900

7 Soi Phaholyothin 24, Phaholyothin Rd., Jompol, Chatuchak, Bangkok 10900

Tel : (662) 939-4370-72, Fax : (662) 513-4221, E-mail : sale@spscon.com, www.spscon.com

Calibration Report  
Total Hydrocarbon Analyzer

Date : 02 November 2022

Brand : HORIBA

Model : APHA-360CE

No. B01

Serial No. 4211954001

Calibrator (Dilution System)

Brand : API

Model : 700

Last Cal. Date : 04 August 2022

Serial No. : 911

Reference Standard Gas

Standard Gas : Methane (CH<sub>4</sub>)

Cylinder No. : D595075

Certified Date : 17 March 2015

Expired Date : 17 March 2023

Cylinder Conc. : 456 ppm

Calibrating Condition

Pressure 1011 mmbar

Temp. 24.6 °C

% RH 48

Start Time : 9:00 AM

Pre-Calibration Checks

Change Particulate Filter Yes

Station Temp : 25.0 °C

Leak Test Yes

Calibration Setting

Span Set Point

Initial Reading (Before Adj)

Final Reading (After Adj)

Expected Concentration (PPM)

Analyzer Response (PPM)

Analyzer Response (PPM)

Zero

0

-0.10

0

Span

10

10.03

10

Calibration Setting (Final)

Span Instrument Gain: 0.997

Finish Time: 10:00 AM

APHA-360 Total Hydrocarbon Analyzer

Test Values	Observed Value	Units	Nominal Range
Signal (CH <sub>4</sub> )	912.3	mV	800-1,350
Signal (THC)	916.8	mV	800-1,350
Detector	77.9	kPa	((Pressure Air/1013)x100)-20 ± 4 kPa
Purifier	19.2	kPa	8 - 25
NMC	259.1	°C	260 ± 10
Bypass	0.9	L / min	0.9 ± 0.3
Over Flow	0.8	L / Min	0.8

ระดับเสียงในสถานประกอบการ



Request No. 21-65/0455

MTC No. EEL. BP. 41/0465

## CALIBRATION CERTIFICATE

**Submitted by** : S.P.S. Consulting Service Co.,Ltd.  
**Address** : 7 Soi Phaholyothin 24, Phaholyothin Road, Jompol, Chatuchak, Bangkok 10900.  
**Calibrated at** : Electrical and Electronic Standards Laboratory, Industrial Metrology and Testing Service Centre.  
: Soi 1C, Bangpoo Industrial Estate, Sukhumvit Rd., Muang, Samutprakan 10280.

### Instrument Calibrated :

**Description** : Sound Calibrator  
**Manufacturer** : ACO  
**Model** : 2127  
**Serial No.** : 130006

### Ambient Environment

**Temperature** :  $(23 \pm 3) ^\circ\text{C}$   
**Relative Humidity** :  $(50 \pm 15) \%$   
**Ambient Pressure** :  $(101.325 \pm 1.500) \text{ kPa}$

**Standards used** : 1. Digital Function Synthesizer NF Electronic DF-193A S/N 122037.

2. Measuring Amplifier Bruel&Kjaer 2636 S/N 1537484.
3. Programmable Attenuator Tamagawa TPA-303A S/N OF 2214.
4. Digital Multimeter Agilent 34401A S/N MY44005560.
5. Pressure Transmitter Vaisala PTB202AD S/N T0650001.
6. Audio Analyzer Keithley 2015-P S/N 4106495.
7. Condenser Microphone Bruel&Kjaer 4180 S/N 2889871.

**Calibration Procedure:** CP-102-04 based on IEC 60942-2003. The sound pressure level of instrument was measured by standard microphone using an insert voltage technique.

This instrument has been calibrated against standards maintained at Electrical and Electronic Standards Laboratory (EEL), which are traceable to the International System of Units through the National Institute of Metrology (Thailand).

The information on actual reading is attached herewith and the uncertainty limits quoted refer to the measured values only.

**Date of Receipt** : 22 Apr. 2022

**Date of Calibration** : 28 Apr. 2022

The results relate only to the items tested/calibrated or value assigned.

Advertising the Report/Certificate and publicity of the results except in full are prohibited unless written permission is obtained from the governor of TISTR.

FM.BL.MTC.002 Rev.4

THAILAND INSTITUTE OF SCIENTIFIC AND TECHNOLOGICAL RESEARCH (TISTR)

Request No. 21-65/0455

MTC No. EEL. BP. 41/0465

The reported expanded uncertainty is based upon a standard uncertainty multiplied by a coverage factor  $k = 2$ , providing a level of confidence of approximately 95%.

Nominal Output of Unit Under Test = 94 dB re 20 $\mu$ Pa at 1000 Hz

Acoustic Output in dB re 20 $\mu$ Pa, Corrected to Reference Conditions: 101.325 kPa, 23.0 °C and 50 %RH.

1. Sound Pressure Level

Standard Microphone Type	Measured Sound Pressure Level (dB)	Deviated value (dB)	Uncertainty (dB)	Tolerance limit IEC60942:2003 Class 1
1/2 inch Bruel&Kjaer 4180	93.93	-0.07	$\pm 0.10$	$\pm 0.40$ dB

2. Frequency

Standard Microphone Type	Measured Frequency (Hz)	Deviated value (Hz)	Uncertainty (Hz)	Tolerance limit IEC60942:2003 Class 1
1/2 inch Bruel&Kjaer 4180	999.9	-0.1	$\pm 1.5$	$\pm 1.0\%$

3. Total Distortion

Standard Microphone Type	Measured Total Distortion (%)	Uncertainty (%)	Tolerance limit IEC60942:2003 Class 1
1/2 inch Bruel&Kjaer 4180	1.44	$\pm 0.50$	$\pm 3.0\%$

- Note :
1. No adjustment.
  2. The calibrator pressure correction was not included.
  3. The microphone volume correction was not included.

Calibrated by :



Date of Calibration : 28 Apr. 2022

Industrial Metrology and Testing Service Centre

Date of Issue : 28 Apr. 2022

Ref : 2011265042601787001

2 / 2

End of Certificate

The results relate only to the items tested/calibrated or value assigned.

Advertising the Report/Certificate and publicity of the results except in full are prohibited unless written permission is obtained from the governor of TISTR.

FM.BLMTC.002 Rev.4

Head Office  
35 Mu 3 Tambon Khlong Ha, Amphoe Khlong Luang,  
Changwat Pathumthani 12120, Thailand  
Tel. (66) 0 2577 9000  
Fax. (66) 0 2577 9009  
E-mail : rumpai@tistr.or.th Website:www.tistr.or.th

Office/Laboratory  
Soi 1C, Bangpoo Industrial Estate, Sukhumvit Road,  
Amphoe Muang, Changwat Samutprakan 10280, Thailand  
Tel. (66) 0 2323 1672-80 ext. 115, 116  
Fax. (66) 0 2323 9165  
E-mail : mtc@tistr.or.th

Office  
196 Phahonyothin Road, Chatuchak, Bangkok 10900,  
Thailand  
Tel. (66) 0 2579 1121-30 ext. 5219, 5225, 5217  
Fax. (66) 0 2579 8592  
E-mail : sumalee@tistr.or.th



บริษัท เอส.พี.เอส. คอนซัลติ้ง เซอร์วิส จำกัด  
S.P.S. CONSULTING SERVICE CO., LTD.  
7 ซอยพหลโยธิน 24 ถนนพหลโยธิน แขวงจตุจักร เขตจตุจักร กรุงเทพฯ 10900  
7 Soi Phaholyothin 24, Phaholyothin Rd., Jompol, Chatuchak, Bangkok 10900  
Tel : (662) 939-4370-72, Fax : (662) 513-4221, E-mail : sale@spscon.com, www.spscon.com

Noise R\_410/22

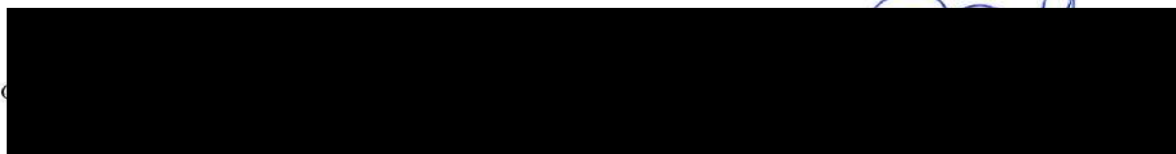
## Sound Level Meter Calibration Report

### Acoustic Calibrator Data

Brand	ACO	Number	AC 03/56
Model	2127	Serial No.	130006
Calibration Range	94 dB, 1000 Hz	Last Calibration	28 April 2022
		Due Date	28 April 2023

### Calibration Data

Sound Level Meter Data				Calibration Data		
SLM No.	Brand	Model	Serial No.	Date	Actual Reading [dB]	
					Before Adjustment	After Adjustment
ACO-R21	ACO	6236	00182004	07 August 2022	94.1	94.0
ACO-R36	ACO	6236	00192048	07 August 2022	94.0	94.0
ACO-R37	ACO	6236	00192049	07 August 2022	94.0	94.0
ACO-R38	ACO	6236	00192050	07 August 2022	94.1	94.0
ACO-R46	ACO	6236	00192058	07 August 2022	94.0	94.0
Acoustic Certified Value : Thailand Institute of Scientific and Technological Research (TISTR)					93.93 ± 0.10 dB	





การรับสมัครสารเคมี



บริษัท เอส.พี.เอส. คอนซัลติ้ง เซอร์วิส จำกัด

S.P.S. CONSULTING SERVICE CO., LTD.

7 ซอยพหลโยธิน 24 ถนนพหลโยธิน แขวงจอมพล เขตจตุจักร กรุงเทพฯ 10900  
7 Soi Phaholyothin 24, Phaholyothin Rd., Jompol, Chatuchak, Bangkok 10900  
Tel : (662) 939-4370-72, Fax : (662) 513-4221, E-mail : sale@spscon.com, www.spscon.com

Personal Pump Calibration Report

Calibration Method : Dry Cal Primary Flowmeter

Model : Defender 510-H

S/N : 136164

Environmental Conditions

Temperature : 25  $\pm$  3  $^{\circ}$ C  
Pressure : 1010  $\pm$  15 mmbar

Personal Pump Data					Calibration Data							
No.	Brand	Model	Serial No.	Date	Flow Rate (ml/min)						Value From Calibration Curve	
					Setting			Actual (Q std.)			y	R <sup>2</sup>
					1	2	3	1	2	3		
R01	SKC	224-PCXR4	602467	06/10/2022	1,000	1,500	2,000	993	1,508	2,004	1.020x - 38.145	0.999
R02	SKC	224-PCXR4	626450	06/10/2022	1,000	2,000	3,000	998	1,499	1,990	0.989x + 12.189	1.000
R03	SKC	224-PCXR4	691592	03/10/2022	1,000	1,500	2,000	1,004	1,500	2,004	1.011x - 21.482	0.999
R04	SKC	224-PCXR4	691672	03/10/2022	1,000	1,500	2,000	996	1,493	1,994	0.997x - 0.766	1.000
R05	SKC	224-PCXR4	798470	06/10/2022	1,000	1,500	2,000	994	1,505	1,999	1.014x - 30.635	0.999
R06	SKC	224-PCXR4	798456	06/10/2022	1,000	1,500	2,000	994	1,498	1,994	1.002x - 7.000	1.000
R07	SKC	224-PCXR4	798480	06/10/2022	1,000	1,500	2,000	994	1,490	1,999	1.008x - 16.751	1.000
R08	SKC	224-PCXR4	883215	06/10/2022	1,000	1,500	2,000	1,001	1,501	2,005	1.014x - 26.148	0.999
R09	SKC	224-PCXR4	034650	06/10/2022	1,000	1,500	2,000	991	1,504	2,002	1.018x - 36.179	0.999
R10	SKC	224-PCXR4	091765	06/10/2022	1,000	1,500	2,000	996	1,512	1,994	1.000x + 0.140	1.000
R11	SKC	224-PCXR4	091763	06/10/2022	1,000	1,500	2,000	1,000	1,499	2,002	1.013x - 25.678	0.999
R12	SKC	224-PCXR4	091568	06/10/2022	1,000	1,500	2,000	997	1,501	1,999	1.001x - 5.065	1.000
R13	SKC	224-PCXR4	091638	06/10/2022	1,000	1,500	2,000	1,002	1,499	1,994	0.992x + 9.636	1.000
R14	SKC	224-PCXR4	091764	06/10/2022	1,000	1,500	2,000	994	1,502	1,999	1.014x - 30.053	0.999
R15	SKC	224-PCXR8	529457	06/10/2022	1,000	1,500	2,000	1,001	1,500	2,004	1.013x - 25.023	0.999
R16	SKC	224-PCXR8	529643	06/10/2022	1,000	1,500	2,000	998	1,497	1,994	0.998x - 1.017	1.000
R17	SKC	224-PCXR8	529645	06/10/2022	1,000	1,500	2,000	994	1,509	2,000	1.015x - 30.372	0.999
R18	SKC	224-PCXR8	566756	06/10/2022	1,000	1,500	2,000	991	1,498	1,998	1.001x - 6.880	1.000
R19	SKC	224-PCXR8	566802	06/10/2022	1,000	1,500	2,000	1,003	1,499	2,000	1.009x - 19.751	0.999
R20	SKC	224-PCXR8	529089	06/10/2022	1,000	1,500	2,000	990	1,501	2,003	1.020x - 40.195	0.999
R21	SKC	224-PCXR8	665728	06/10/2022	1,000	1,500	2,000	998	1,493	1,999	1.001x - 6.003	1.000
R22	SKC	224-PCXR8	707444	06/10/2022	1,000	1,500	2,000	1,002	1,500	2,002	1.011x - 21.733	0.999
R23	SKC	224-PCXR8	761067	06/10/2022	1,000	1,500	2,000	998	1,494	1,991	0.993x + 36.535	1.000
R24	SKC	224-PCXR8	707893	06/10/2022	1,000	1,500	2,000	996	1,505	2,000	1.013x - 27.803	0.999
R25	SKC	224-PCXR8	761052	05/10/2022	1,000	1,500	2,000	998	1,499	1,993	0.993x + 6.713	1.000
R26	SKC	224-PCXR8	707956	05/10/2022	1,000	1,500	2,000	1,002	1,500	2,004	1.013x - 24.058	0.999
R27	SKC	224-PCXR8	707398	05/10/2022	1,000	1,500	2,000	996	1,503	2,001	1.006x - 15.683	1.000
R28	SKC	224-PCXR8	707461	05/10/2022	1,000	1,500	2,000	1,004	1,500	2,003	1.010x - 19.687	0.999
R29	SKC	224-PCXR8	707402	05/10/2022	1,000	1,500	2,000	1,005	1,493	1,991	0.988x + 14.366	1.000
R30	SKC	224-PCXR8	093811	05/10/2022	1,000	1,500	2,000	999	1,495	1,994	0.997x - 0.8069	1.000
R31	SKC	224-PCXR8	093183	06/10/2022	1,000	1,500	2,000	1,001	1,501	2,001	1.012x - 22.523	0.999
R32	SKC	224-PCXR8	671950	06/10/2022	1,000	1,500	2,000	1,000	1,498	1,994	0.994x + 8.041	1.000
R33	SKC	224-PCXR4	626254	06/10/2022	1,000	1,500	2,000	993	1,502	1,999	1.016x - 33.303	0.999
R34	SKC	224-PCXR4	626131	06/10/2022	1,000	1,500	2,000	1,002	1,498	2,004	1.013x - 24.453	0.999
R35	SKC	224-PCXR8	707460	06/10/2022	1,000	1,500	2,000	999	1,498	1,995	0.994x + 6.709	1.000
R36	SKC	224-PCXR8	707446	06/10/2022	1,000	1,500	2,000	1,003	1,499	2,001	1.009x - 19.432	0.999
R37	SKC	224-PCXR8	707432	06/10/2022	1,000	1,500	2,000	997	1,499	1,998	0.998x + 0.116	1.000
R38	SKC	224-PCXR8	707349	05/10/2022	1,000	1,500	2,000	996	1,500	2,002	1.015x - 31.540	0.999
R39	SKC	224-PCXR8	761095	05/10/2022	1,000	1,500	2,000	1,001	1,498	1,994	0.997x + 2.094	1.000



บริษัท เอส.พี.เอส. คอนซัลติ้ง เซอร์วิส จำกัด  
S.P.S. CONSULTING SERVICE CO., LTD.  
7 ซอยพหลโยธิน 24 ถนนพหลโยธิน แขวงจอมพล เขตจตุจักร กรุงเทพฯ 10900  
7 Soi Phaholyothin 24, Phaholyothin Rd., Jompol, Chatuchak, Bangkok 10900  
Tel : (662) 939-4370-72, Fax : (662) 513-4221, E-mail : sale@spscon.com, www.spscon.com

Rotameter Calibration Report (For Personal Pump Low Flow Adjust)

Calibration Method : Dry Cal Primary Flowmeter

Model : Defender 510-H

S/N : 136164

Calibration Data

Rotameter Data			Calibration Data								
No.	Brand	Model	Date	Flow Rate (ml/min)						Value From Calibration Curve	
				Flow Rate (Reading)			Actual (Q std.)				
				1	2	3	1	2	3	y	R²
L-R01	Dwyer	VFA-21	04/10/2022	50	100	200	50.2	101.0	203.9	0.987x + 2.546	1.000
L-R02	Dwyer	VFA-21	05/10/2022	50	100	200	50.1	101.3	200.5	1.007x - 0.870	0.999
L-R03	Dwyer	VFA-21	06/10/2022	50	100	200	50.1	99.8	202.3	1.017x - 1.042	1.000
L-R04	Dwyer	VFA-21	06/10/2022	50	100	200	50.2	100.9	201.0	1.008x - 1.004	0.999
L-R05	Dwyer	VFA-21	05/10/2022	50	100	200	50.2	100.8	203.0	0.990x + 1.973	1.000
L-R06	Dwyer	VFA-21	04/10/2022	50	100	200	50.2	99.1	201.5	1.004x - 0.364	1.000





## GAS CHROMATOGRAPH TEST CERTIFICATION

Certificate No. : SV0822/20530

Instrument Type : GC

Model : CP-3800

Serial Number : 00734

Organization : S.P.S. Consulting Service Co., Ltd.

Address : 7 Phahonyothin Soi 24 Phahonyothin Rd. Ladyao Chatuchak Bangkok 10900

Date : 10/08/2022

### ELECTRONIC TEST

CPU	<input checked="" type="checkbox"/> PASS	<input type="checkbox"/> FAIL
LCD TEST	<input checked="" type="checkbox"/> PASS	<input type="checkbox"/> FAIL
VENT TEST	<input checked="" type="checkbox"/> PASS	<input type="checkbox"/> FAIL
KEY ECHO TEST	<input checked="" type="checkbox"/> PASS	<input type="checkbox"/> FAIL
DESTRUCTION RAM TEST	<input checked="" type="checkbox"/> PASS	<input type="checkbox"/> FAIL

### RUN CHROMATOGRAM TEST

DETECTOR : Flame Ionization Detector ( FID Channel Front)

INJECTOR : Capillary Injector Model 1079

#### GC CONDITION:

Column	80 °C hold 1 min., rate 20 °C/min. to 200 °C hold 1min.
Injector	220 °C
Detector	300 °C
Column flow	5 mL/min
Makeup flow	25 mL/min
Air flow	300 mL/min
Hydrogen flow	30 mL/min

Column:Capillary Column CP sil 5 CB 0.25 ID x 15 M

Sample: 1 µL Injection FID Test Sample 0.218 g/L C14,C15,C16 in hexane

SENSITIVITY TEST: C15. ( Area count ) = 118,103 Counts.





## Detector Sensitivity ( FID )

Detector Response	Result	Specification
Baseline Noise ( $\mu$ V)	2.94	$\leq 50$
Baseline Drift (%)	0.18	$\leq 1$
Sensitivity ( S/N for C15)	4,000	$\geq 1,024$

## Temperature Specification

Temperature	Set	Result	Specification
Column Oven (° C)	80	80	$\pm 5$
Injector (° C)	220	220	$\pm 5$
Detector (° C)	300	300	$\pm 5$
Incubator (° C)	60	N/A	$\pm 5$

## Relative Standard Deviation % ( % RSD)

Checkout Procedure	Result	Specification
Area C15 ( %)	1.68	$\leq 5$
Retention Time C15( %)	0.01	$\leq 0.5$

APPROVAL

Signature: \_\_\_\_\_

Engineer : Suwarot Trikainut

Date : 10/08/2022





Results Integrated System Testing

Checkout Procedure	FID
Detector Position	Front
Inlet Type	1079 Injector
C15 Area 1	117,172
C15 Area 2	119,182
C15 Area 3	117,982
C15 Area 4	118,589
C15 Area 5	117,592
C15 Area Average	118,103
* % RSD ( < 5 % )	1.68

\* The precision specification should be less than 2.0 % RSD \*\* ( Relative Standard Deviation ) for an Auto sampler injection and less than 5 % for Manual injections. To calculate the %RSD, select the C15 peak area for each of the five ( 5 ) samples.

\*\* (Relative Standard Deviation is determined by dividing the standard deviation by the average and multiplying by 100.)

$$\% \text{ RSD} = ( \text{std.dev} / \text{avg} ) * 100$$

Compliance	<input checked="" type="checkbox"/> Pass	<input type="checkbox"/> Fail
Performance by		
Date	10/08/2022	



Comments	
Reviewed by	







Results Integrated System Testing

Checkout Procedure	FID
Detector Position	Front
Inlet Type	1079 Injector
C15 RT 1	4.048
C15 RT 2	4.048
C15 RT 3	4.048
C15 RT 4	4.048
C15 RT 5	4.048
C15 RT Average	4.000
* % RSD ( < 0.5 % )	0.01

\* The precision specification should be less than 0.5 % RSD \*\* ( Relative Standard Deviation ) for an Auto sampler injection and less than 0.5 % for Manual injections. To calculate the %RSD, select the RT C15 peak for each of the five ( 5 ) samples.

\*\* (Relative Standard Deviation is determined by dividing the standard deviation by the average and multiplying by 100.)

$$\% \text{ RSD} = ( \text{std.dev} / \text{avg} ) * 100$$

Compliance	<input checked="" type="checkbox"/> Pass	<input type="checkbox"/> Fail
Performance by		
Date	10/08/2022	



Comments	
Reviewed by	



# S.P.S Consulting Service Co.,Ltd.

Sample ID: **fid std**

Operator (Inj): **suwarot**

Injection Date: **16/08/2022**

Calc Date: **16/08/2022**

Run Time (min): **7.993**

Workstation:

Instrument (Inj): **Varian Star #1**



**VARIAN**

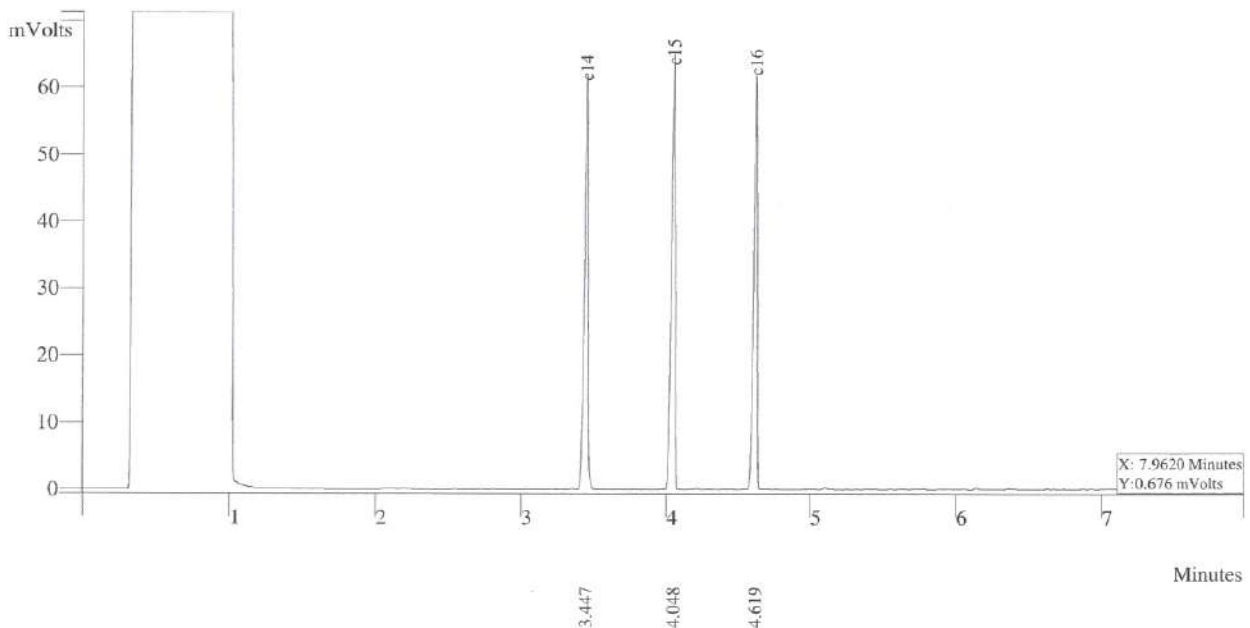
Run Mode: **Analysis**

Peak Measurement: **Peak Area**

Calculation Type: **Percent**

c:\star\data\tu\cal2022\fid2022001.run

A = FID 10 V RESULTS



Peak No	Peak Name	Result ()	Ret Time (min)	Peak Area (counts)	Sep. Code	Width 1/2 (sec)
1	c14	32.2988	3.477	112355	VP	1.7
2	c15	33.6834	4.048	117172	VV	1.5
3	c16	34.0178	4.619	118335	VP	1.5
Totals		100.0000		347862		



**THAI UNIQUE CO.,LTD.**

1 Of 1

# S.P.S Consulting Service Co.,Ltd.

Sample ID: **fid std**

Operator (Inj): **suwarot**

Injection Date: **16/08/2022**

Calc Date: **16/08/2022**

Run Time (min): **7.993**

Workstation:

Instrument (Inj): **Varian Star #1**



**VARIAN**

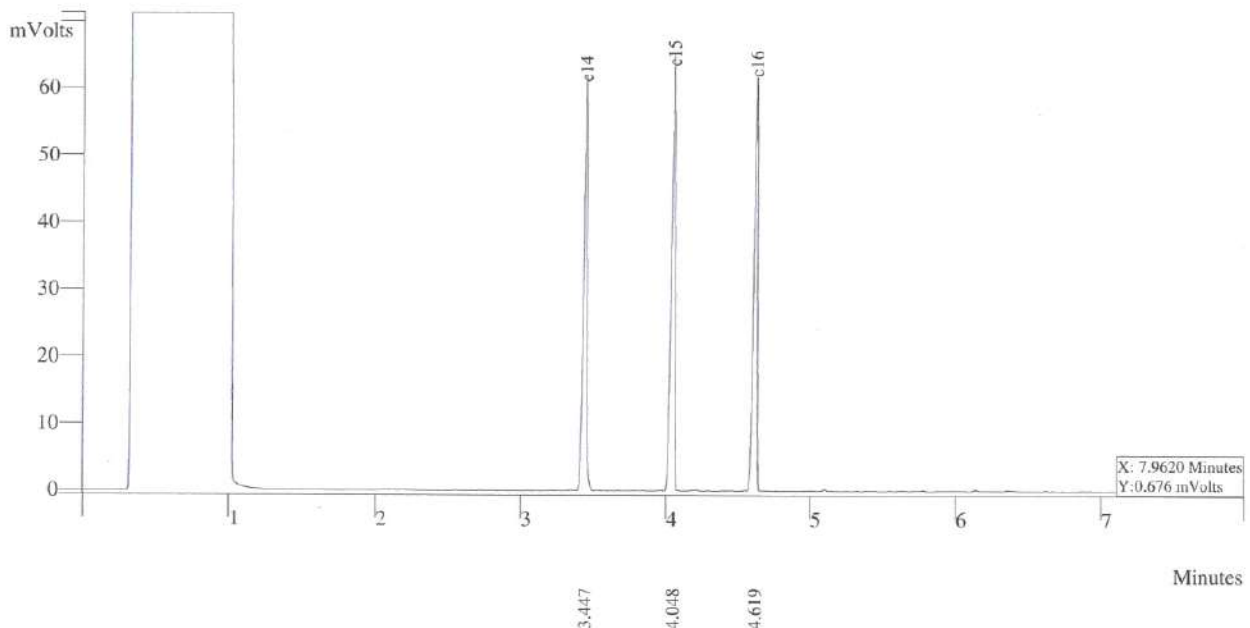
Run Mode: **Analysis**

Peak Measurement: **Peak Area**

Calculation Type: **Percent**

c:\star\data\tu\cal2022\fid2022002.run

A = FID 10 V RESULTS



Peak No	Peak Name	Result ()	Ret Time (min)	Peak Area (counts)	Sep. Code	Width 1/2 (sec)
1	c14	32.2988	3.477	112755	VP	1.7
2	c15	33.6834	4.048	119182	VV	1.5
3	c16	34.0178	4.619	118265	VP	1.5
Totals		100.0000		348205		



**THAI UNIQUE CO.,LTD.**

1 Of 1



# S.P.S Consulting Service Co.,Ltd.

Sample ID: **fid std**

Operator (Inj): **suwarot**

Injection Date: **16/08/2022**

Calc Date: **16/08/2022**

Run Time (min): **7.993**

Workstation:

Instrument (Inj): **Varian Star #1**



**VARIAN**

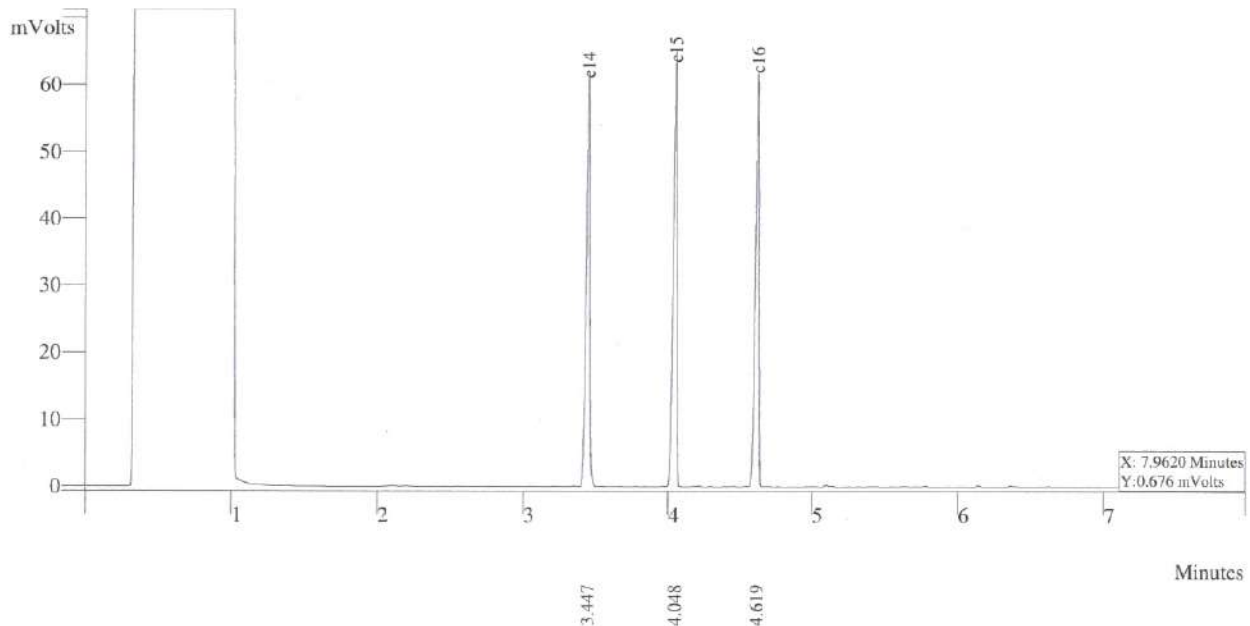
Run Mode: **Analysis**

Peak Measurement: **Peak Area**

Calculation Type: **Percent**

c:\star\data\tu\cal2022\fid2022003.run

A = FID 10 V RESULTS



Peak No	Peak Name	Result ()	Ret Time (min)	Peak Area (counts)	Sep. Code	Width 1/2 (sec)
1	c14	32.2988	3.477	112755	VP	1.7
2	c15	33.6834	4.048	117982	VV	1.5
3	c16	34.0178	4.619	118265	VP	1.5
Totals		100.0000		348205		



**THAI UNIQUE CO.,LTD.**

1 Of 1

# S.P.S Consulting Service Co.,Ltd.

Sample ID: **fid std**

Operator (Inj): **suwarot**

Injection Date: **16/08/2022**

Calc Date: **16/08/2022**

Run Time (min): **7.993**

Workstation:

Instrument (Inj): **Varian Star #1**



**VARIAN**

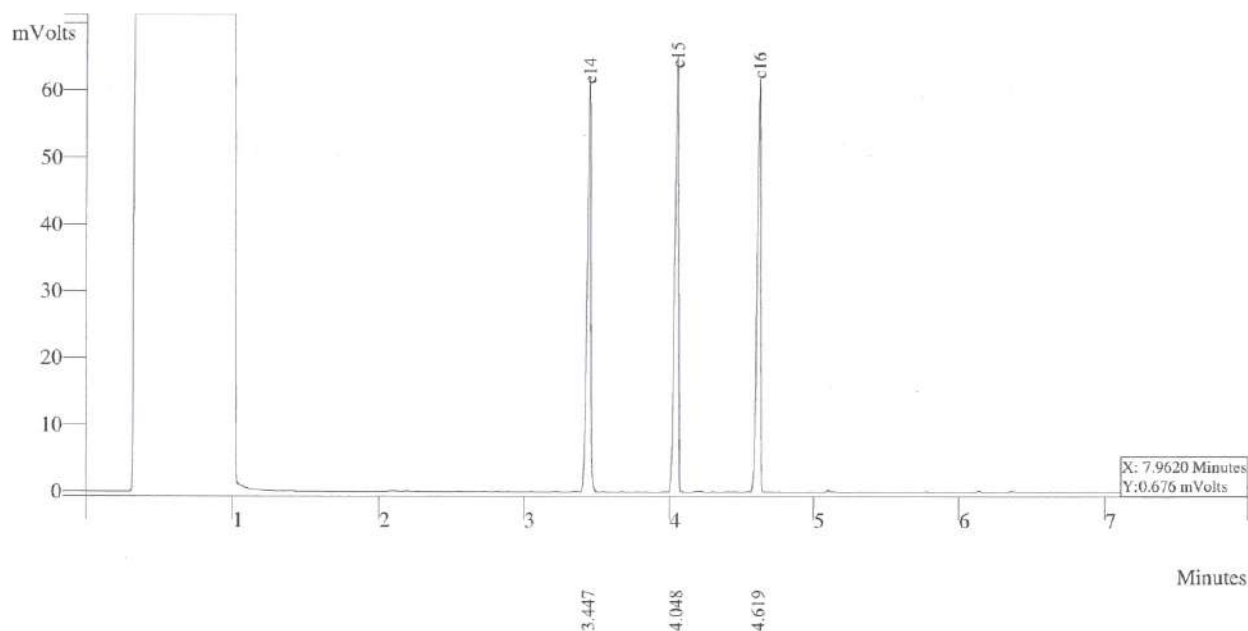
Run Mode: **Analysis**

Peak Measurement: **Peak Area**

Calculation Type: **Percent**

c:\star\data\tu\cal2022\fid2022004.run

A = FID 10 V RESULTS



Peak No	Peak Name	Result ()	Ret Time (min)	Peak Area (counts)	Sep. Code	Width 1/2 (sec)
1	c14	32.2988	3.377	113755	VP	1.7
2	c15	33.6834	4.048	118589	VV	1.5
3	c16	34.3178	4.619	128265	VP	1.5
	Totals	100.0000		360202		



**THAI UNIQUE CO.,LTD.**

1 Of 1

# S.P.S Consulting Service Co.,Ltd.

Sample ID: **fid std**

Operator (Inj): **suwarot**

Injection Date: **16/08/2022**

Calc Date: **16/08/2022**

Run Time (min): **7.993**

Workstation:

Instrument (Inj): **Varian Star #1**



**VARIAN**

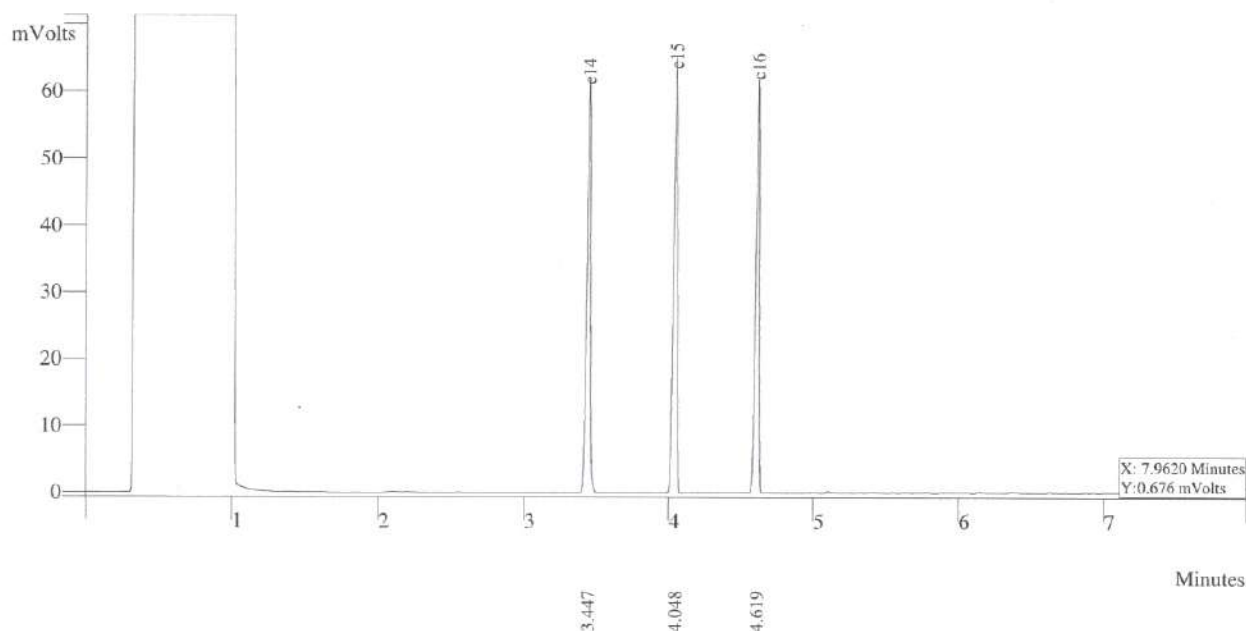
Run Mode: **Analysis**

Peak Measurement: **Peak Area**

Calculation Type: **Percent**

c:\star\data\tu\cal2022\fid2022005.run

A = FID 10 V RESULTS



Peak No	Peak Name	Result ()	Ret Time (min)	Peak Area (counts)	Sep. Code	Width 1/2 (sec)
1	c14	32.2988	3.377	115755	VP	1.7
2	c15	33.6834	4.048	117592	VV	1.5
3	c16	34.3178	4.619	138265	VP	1.5
Totals		100.0000		369202		



**THAI UNIQUE CO.,LTD.**

1 Of 1



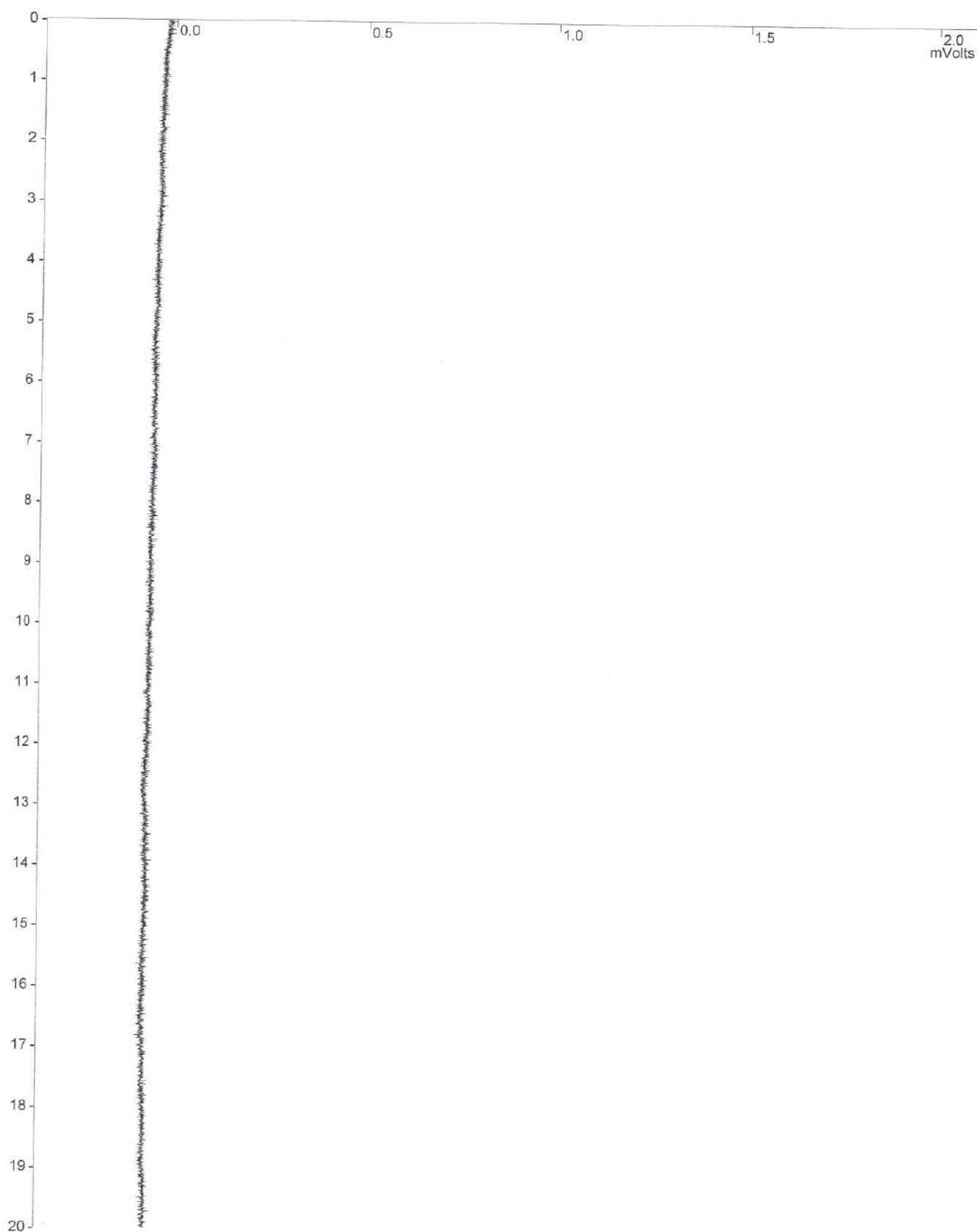
Title :  
Run File : d:\céíÁÜÄ gc\céíÁÜÄ·Ñé\$EÁ'\drive-d\2017\2022\08\baseline.run  
Method File : D:\Method-GC\star C\Star\TU\Cal2021\baseline FID.mth  
Sample ID : baseline

Injection Date: 16/8/2565 14:32      Calculation Date: 16/8/2565 15:12

Operator : suwarot      Detector Type: 3800 (10 Volts)  
Workstation: Local Disk      Bus Address : 44  
Instrument : baseline      Sample Rate : 10.00 Hz  
Channel : Front = FID      Run Time : 39.960 min

\*\* GC Workstation Version 6.41 \*\* 03334-6390-826-0764 \*\*

Chart Speed = 1.09 cm/min      Attenuation = 1      Zero Offset = 14%  
Start Time = 0.000 min      End Time = 20.000 min      Min / Tick = 1.00



Title :  
 Run File : d:\céfĀŮĀ gc\céfĀŮĀ.NēSEĀ'\drive-d\2017\2022\08\baseline.run  
 Method File : D:\Method-GC\star C\Star\TU\Cal2021\baseline FID.mth  
 Sample ID : baseline

Injection Date: 16/8/2565 14:32      Calculation Date: 16/8/2565 15:12

Operator : suwarot      Detector Type: 3800 (10 Volts)  
 Workstation: Local Disk      Bus Address : 44  
 Instrument : baseline      Sample Rate : 10.00 Hz  
 Channel : Front = FID      Run Time : 39.960 min

\*\* GC Workstation Version 6.41 \*\* 03334-6390-826-0764 \*\*

Run Mode : Blank Baseline  
 Peak Measurement: Peak Area  
 Calculation Type: External Standard

Peak No.	Peak Name	Result ( )	Ret. Time (min)	Time Offset (min)	Area (counts)	Sep. Code	Width 1/2 (sec)	Status Codes
-----	-----	-----	-----	-----	-----	-----	-----	-----
Totals:		0.0000		0.000	0			

Total Unidentified Counts :      0 counts

Detected Peaks: 0      Rejected Peaks: 0      Identified Peaks: 0

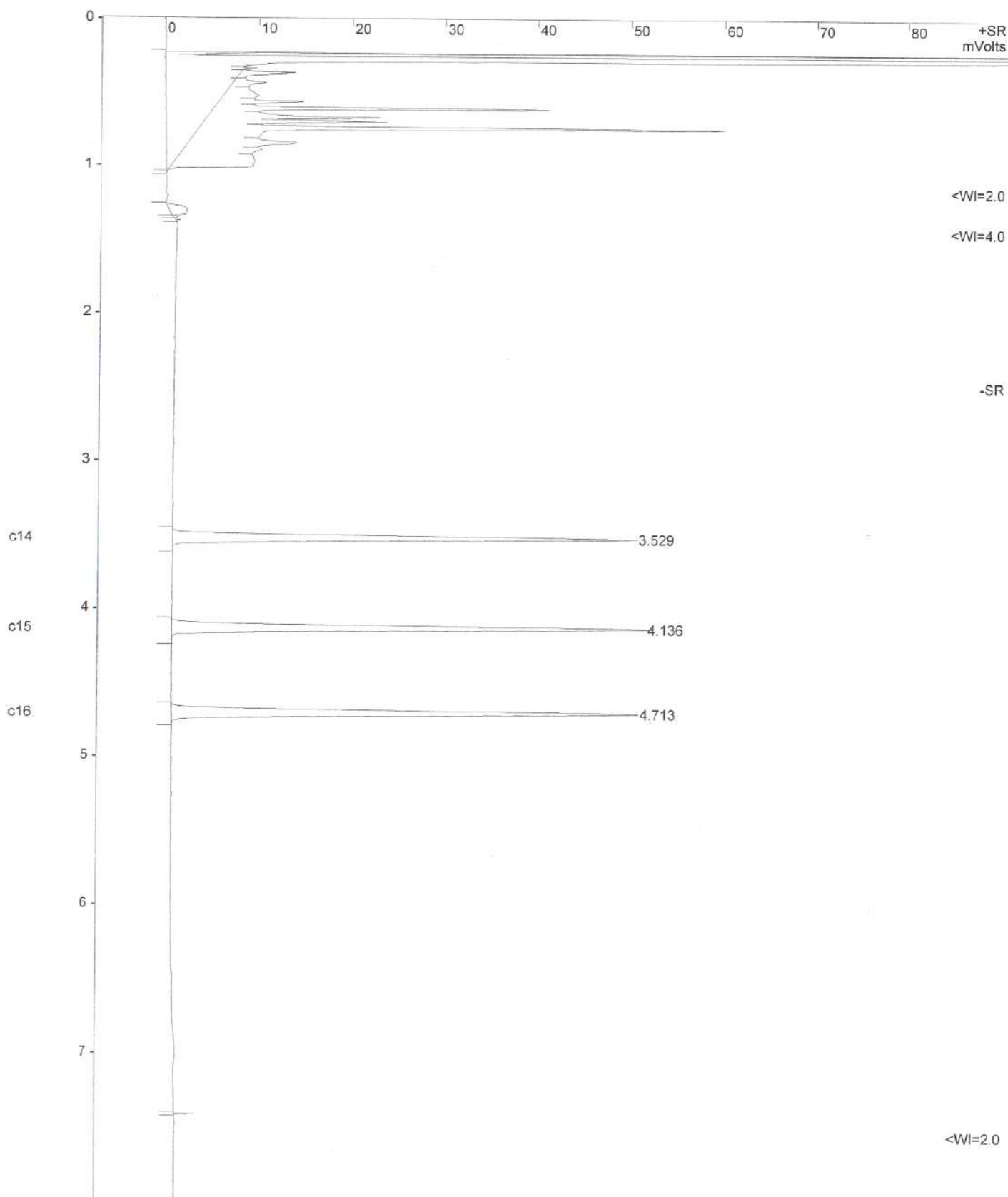
Multiplier: 1      Divisor: 1      Unidentified Peak Factor: 0

Baseline Offset: -2 microVolts      LSB:      1 microVolts

Noise (used): 32 microVolts - monitored before this run

Manual injection

\*\*\*\*\*





Title :  
 Run File : c:\star\data\tu\cal2022\fid2022003.run  
 Method File : d:\cfiAUÅ gc\cfiAUÅ.NéSEÅ'\drive-d\2017\2022\08\fid2022003-front.mth  
 Sample ID : fid2022

Injection Date: 16/8/2565 10:51      Calculation Date: 16/8/2565 11:02

Operator : suwarot      Detector Type: 3800 (10 Volts)  
 Workstation: Local Disk      Bus Address : 44  
 Instrument :      Sample Rate : 10.00 Hz  
 Channel : Front = FID      Run Time : 7.993 min

\*\* GC Workstation Version 6.41 \*\* 03334-6390-826-0764 \*\*

Run Mode : Analysis  
 Peak Measurement: Peak Area  
 Calculation Type: Percent

Peak No.	Peak Name	Result ( )	Ret. Time (min)	Time Offset (min)	Area (counts)	Sep. Code	Width 1/2 (sec)	Status Codes
1	c14	32.2988	3.529	-0.000	112355	BB	2.1	
2	c15	33.6834	4.136	0.000	117172	BB	2.1	
3	c16	34.0178	4.713	-0.000	118335	BB	2.2	
Totals:		100.0000		0.000	347862			

Total Unidentified Counts : 0 counts

Detected Peaks: 4      Rejected Peaks: 1      Identified Peaks: 3

Multiplier: 1      Divisor: 1      Unidentified Peak Factor: 0

Baseline Offset: -28 microVolts      LSB: 1 microVolts

Noise (used): 26 microVolts - monitored before this run

Manual injection

Data Handling: All Coefficients for All Peaks are Zero  
 Data Handling: Default to A%

\*\*\*\*\*